



part of the **CLL** GROUP

0800 255677

**14 Wookey Lane
Kumeū
AUCKLAND**

antareshire.nz



2025

PLANT & TOOLING CATALOGUE



EXCAVATORS:

EXCAVATOR ATTACHMENTS:

PLANT & TOOLING



PILING TOOLS:



www.antareshire.nz

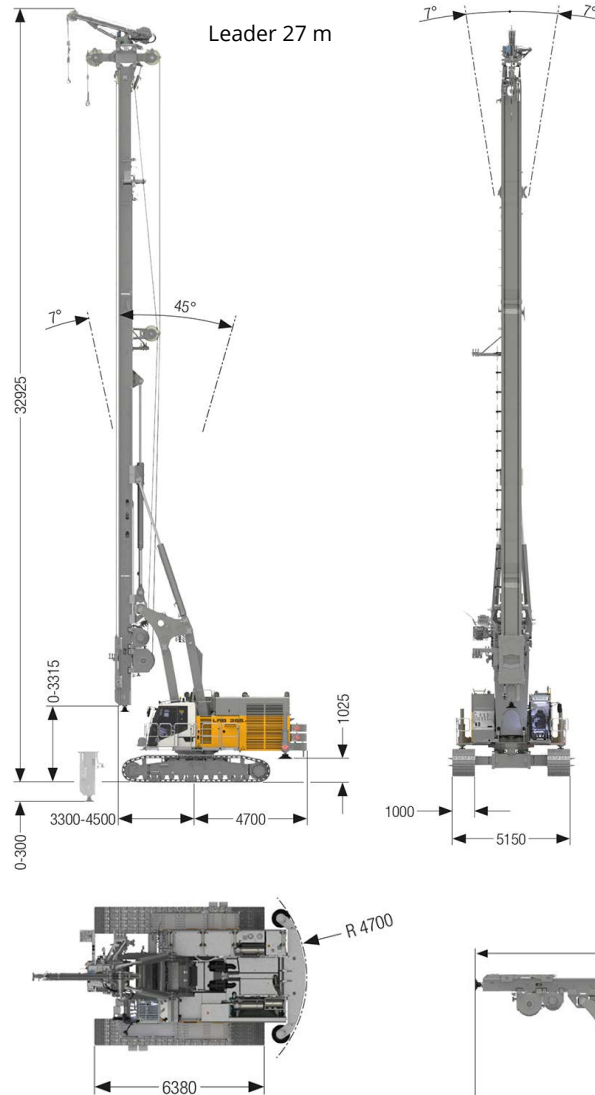
0800 255677



LIEBHERR LRB355.1 Piling Rig

New Zealand's largest piling rig! The LRB355 drills up to 80 m deep when in Kelly mode, and installs 1200 mm diameter CFA to a depth of 33.5 m and FDP to 33.8 m.

Operational Dimensions (Type 260)



Modes:

- Kelly
- Continuous Flight Auger (CFA)
- Double Rotary CFA
- Full Displacement Piles (FDP)
- Olivier Piles
- Down the Hole
- RAPs
- VIBE

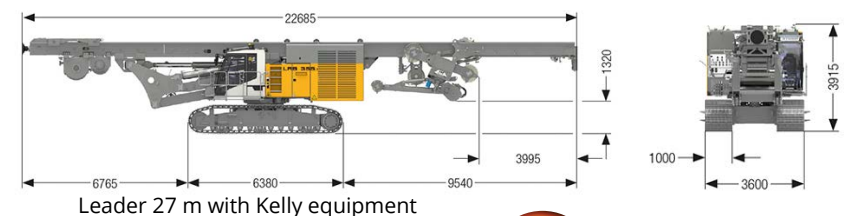
Attachments:

- DBA300
- 1500H
- BAT450

Technical Data

Diesel Engine	Type	Liebherr D9512 A7-04
	Power Rating	750 kW (1005 hp) at 1700 rpm
	Fuel Tank	1300 l with reserve warning
Hydraulic System	Pumps for Attachments	3 x 396 + 2 x 430 l/min
	Pumps for Kinematics	215 l/min
	Oil Tank	1100 l
	Working Pressure	400 bar
Crawler Undercarriage 260	Drive Speed	0-1.8 km/h
	Track Force	745 kN
	Grousers	3-web grousers, width 1000 mm
Swing Speed		0-2.4 rpm
Kelly Winch	Line Pull	250 kN (1st layer)
	Rope Diameter	34 mm
	Rope Speed	0-85 m/min
Auxiliary Winch	Line Pull	80 kN (3rd layer)
	Swing Range	left 180°, right 90°
	Rope Diameter	20 mm
	Rope Speed	0-54 m/min
Crowd Winch	Crowd Force	400/400 kN (push/pull)
	Line Pull Effective	200 kN
	Travel with 27 m Leader	23.5 m
	Rope Speed	0-70 m/min
Weight	Operating	128 t (w Kelly Equip + 3 x 6 t counterweight)
	Transport	90.7 t (w Kelly Equipment)
Extended Height		32.9 m (Leader 27 m)
Dimensions	Operating	5150(W) x 9200(L) x 32925(H)
	Transport	3600(W) x 22685(L) x 3915(H)

Transportation Dimensions (Type 260)



Leader 27 m with Kelly equipment

0800 255677

www.antareshire.nz



LIEBHERR LRB355.1 Pile Driving & Drilling Modes

1500H VIBRATORY HAMMER



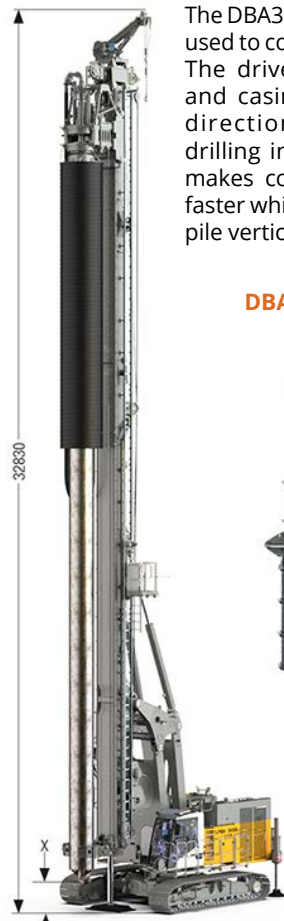
Pile length is valid for an X value of 500 mm

1500H



1500H vibrating a single pile between two other piles

DBA300 DOUBLE ROTARY DRIVE



Drilling depths are valid for use of standard tools and an X value of 300 mm
When using protective hose, reduce max. drilling depth by 800 mm
When using two-fall pulling device, reduce max. drilling depth by 2500 mm

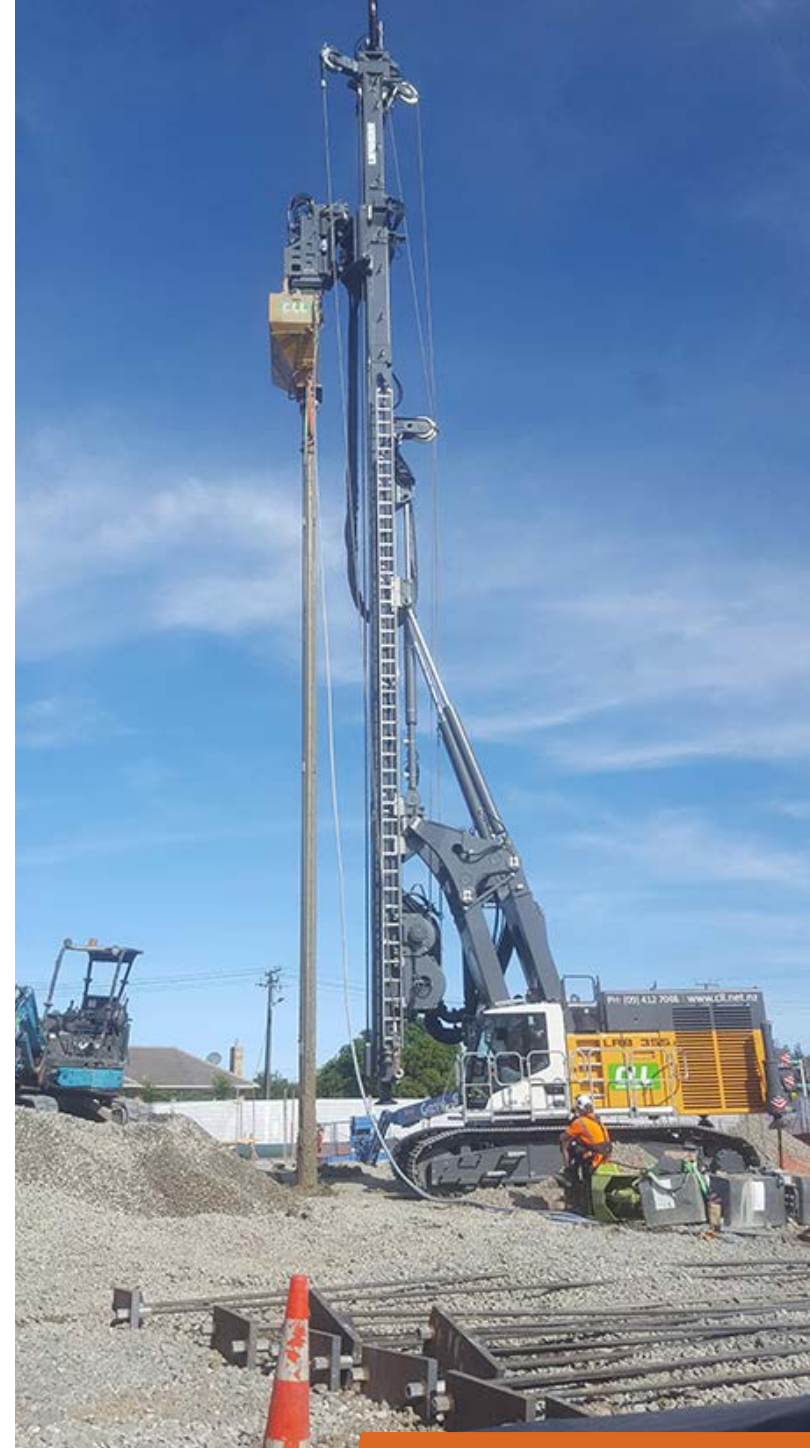
The DBA300 double rotary drive is used to construct cased CFA piles. The drive units for the auger and casing rotate in opposite directions, simultaneously drilling into the ground, which makes continuous drilling much faster whilst the casing keeps the pile vertical.

DBA300 close-up



Max. Pile Length (27 m leader)	26 m
Static Moment	0-30 kgm
Max. Frequency	2160 rpm
Max. Centrifugal Force	1535 kN
Max. Amplitude with Clamp	14.5 mm
Total Weight	7200 kg
Total Weight w Single Clamp	8300 kg
Dynamic Weight w Clamp	4150 kg

Max. Drilling Depth	26 m
Max. Drilling Diameter	900 mm
Rotary Drive I (casing) - Torque	0-300 kNm
Rotary Drive I (casing) - Speed	0-26 rpm
Rotary Drive II (auger) - Torque	0-150 kNm
Rotary Drive II (auger) - Speed	0-30 rpm
Max. Pull Force single-fall (crowd & Kelly winches)	650 kN
Max. Pull Force two-fall (crowd & Kelly winches)	900 kN





LIEBHERR LRB355.1 Drilling Modes

BAT450 KELLY DRILLING



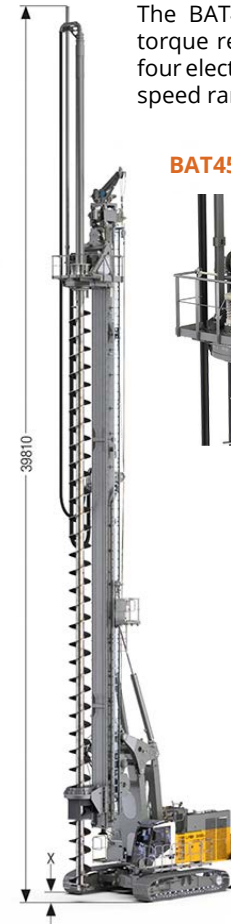
The BAT450 is used for Kelly, continuous flight auger and full displacement drilling.

When using casing oscillator reduce X by 1500 mm
A = 9.95 m - 18.95 m depending on Kelly bars used

Drilling Depth (with Kelly bars)	27-63.1 m
Rotary Drive - Torque	450 kNm
Rotary Drive - Speed	0-38 rpm
Max. Drilling Diameter Uncased	2000 mm
Max. Drilling Diameter* Cased	1500 mm
Max. Drilling Diameter Below the Leader	4400 mm

* depending on design of casing driver

BAT450 CFA DRILLING



The BAT450 has automatic torque regulation as well as four electronically adjustable speed ranges.

Drilling depths are valid for use of standard tools and an X value of 350 mm

Rotary Drive - Torque	450 kNm
Rotary Drive - Speed	0-38 rpm
Drilling Depth (w auger cleaner)	25.5 m
Drilling Depth (w 8 m Kelly ext.)	33.5 m
Max. Drilling Diameter	1200 mm
Max. Pull Force (crowd winch & Kelly winch)	900 kN

BAT450 close-up



BAT450 FDP DRILLING



The BAT450 is powered via the hydraulics on-board the LRB355.

Drilling depths are valid for use of standard tools and an X value of 580 mm

Rotary Drive - Torque	450 kNm
Rotary Drive - Speed	0-38 rpm
Drilling Depth	25.8 m
Drilling Depth (w 8 m Kelly ext.)	33.8 m
Max. Drilling Diameter	600 mm
Max. Pull Force	900 kN

BAT450 Rotary Drive



0800 255677

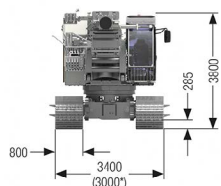
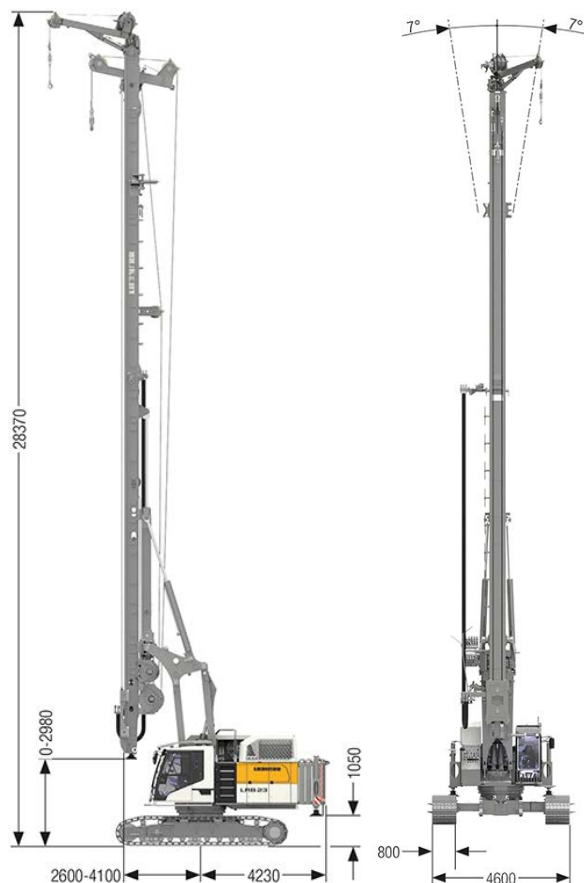
www.antareshire.nz



LIEBHERR LRB23 Piling Rig

The LRB23 is used for drilling and piling construction on deep foundation projects, such as earth retention, preventing landslides, and structural support for buildings as well as tunnel, rail, road and bridge infrastructure projects.

Operational Dimensions (Type 225)



Technical Data

Diesel Engine	Type	Liebherr D976 A7-04
	Power Rating	600 kW (804 hp) at 1700 rpm
	Fuel Tank	800 l with reserve warning
Hydraulic System	Pumps for Attachments	3x320 + 2x320 l/min
	Pumps for Kinematics	166 l/min
	Oil Tank	725 l
Crawler Undercarriage 225	Working Pressure	400 bar
	Drive Speed	0-1.65 km/h
	Track Force	647 kN
Swing Speed	Grousers	3-web grousers, width 800 mm
		0-3.5 rpm
Kelly Winch	Line Pull	230 kN (1st Layer)
	Rope Diameter	28 mm
	Rope Speed	0-80 m/min
Auxiliary Winch	Line Pull	50 kN (3rd layer)
	Swing Range	left 180°, right 90°
	Rope Diameter	17 mm
Crowd Winch	Rope Speed	0-87 m/min
	Crowd Force	320/320 kN (push/pull)
	Line Pull	160 kN
Operating Weight (Fully Rigged)	Travel	20 m
	Rope Speed	0-88 m/min
Extended Height		36.3 m
Dimensions	Operating	4600(W) x 8330(L) x 36300(H)
	Transport	3000(W) x 19695(L) x 3800(H)

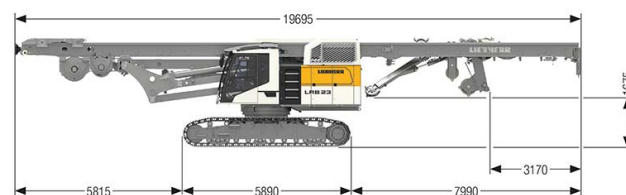
Attachments:

- DBA250
- Vibrator LV36, LV36F & 1500H
- BAT300
- H6 Hydraulic Hammer

Modes:

- Kelly
- Continuous Flight Auger (CFA)
- Double Rotary CFA
- Full Displacement Piles (FDP)
- Olivier Piles
- Down the Hole
- RAPs
- VIBE

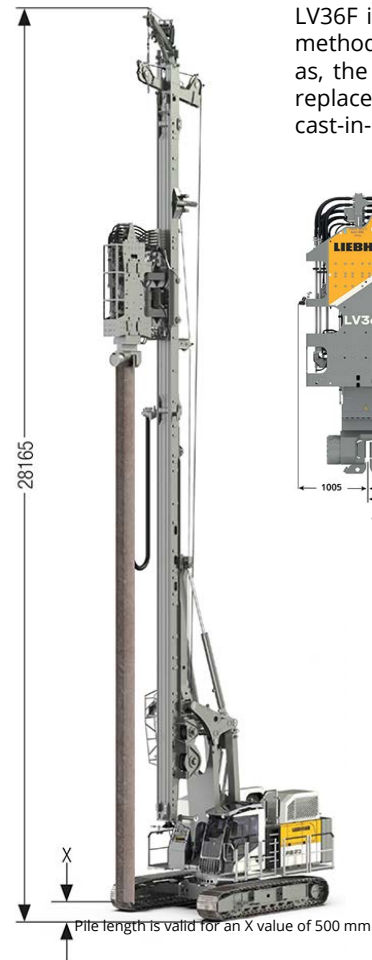
Transportation Dimensions (Type 225)



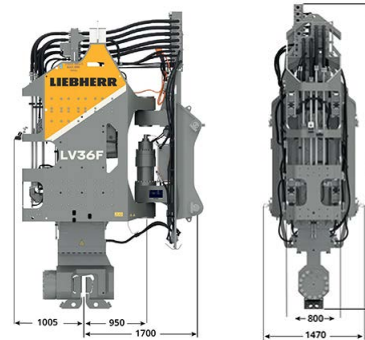


LIEBHERR LRB23 Pile Driving Modes

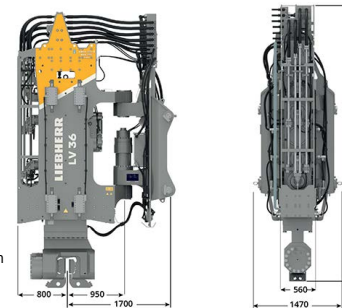
LV36 & LV36F VIBRATORY HAMMERS



LV36F is designed for all common methods of soil improvement, such as, the installation of RAPs, vibro-replacement columns or vibrated cast-in-place piles.



The LV36 high-frequency vibrator is used for installing and extracting steel sheet piles, steel pipes. It recognises obstacles before the sheet pile collides with them.



Max. Pile Length
Max. Speed
Max. Centrifugal Force
Total Weight w Clamp
Dynamic Weight w Clamp
Transport Weight
Swing Range Vibrator

LV36

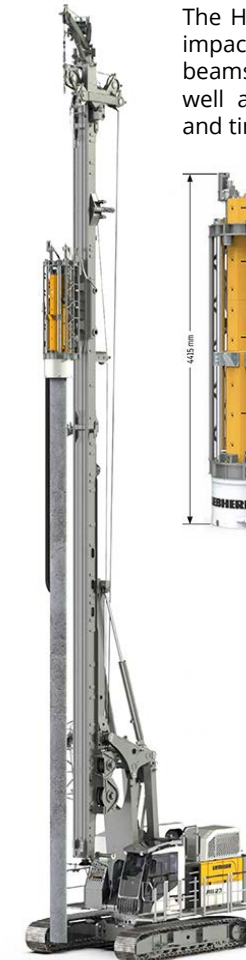
22 m
2400 rpm
1910 kN
11165 kg
6300 kg
11950 kg
+/-87°

LV36F

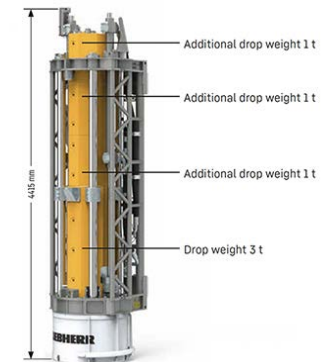
11145 kg
6505 kg
11935 kg
+/-50°



H6 HYDRAULIC HAMMER



The H6 is mostly used for impact driving steel pipes, beams and sheet piles, as well as pre-cast concrete and timber piles.

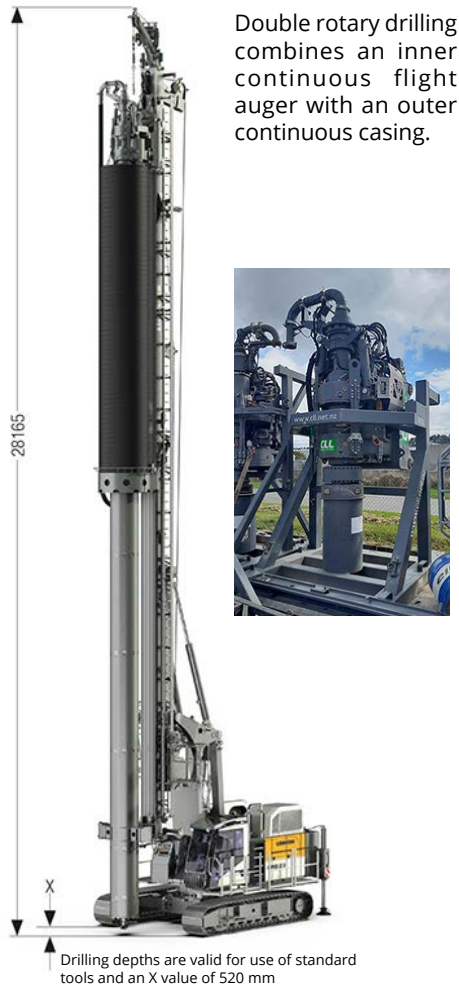


Max. Pile Length
Drop Weight
Max. Rated Energy
Blow Rate Max. Energy
Max. Blow Rate
Total Weight
Pile Winch

20 m
6 t
72 kN
50 blows/min
150 blows/min
9000 kg
120 kN

LIEBHERR LRB23 Drilling Modes

DBA250 DOUBLE ROTARY DRIVE



Max. Drilling Depth	22 m
Max. Drilling Diameter	900 mm
Rotary Drive I (casing) - Torque	0-247 kNm
Rotary Drive I (casing) - Speed	0-30 rpm
Rotary Drive II (auger) - Torque	0-113 kNm
Rotary Drive II (auger) - Speed	0-34 rpm
Max. Pull Force (crowd winch & Kelly winch)	780 kN

BAT300 KELLY DRILLING



Drilling Depth (with Kelly bars)	24.1-72.3 m
Rotary Drive - Torque	300 kNm
Rotary Drive - Speed	0-46 rpm
Max. Drilling Diameter Uncased	1900 mm
Max. Drilling Diameter Cased*	1500 mm
Max. Drilling Diameter Below the Leader	2900 mm
* depending on design of casing driver	

BAT300 CFA DRILLING



Max Drilling Depth	21.6 m
Drilling Depth with 8m Kelly Ext.	29.7 m
Drilling Depth with 10m Kelly Ext.	31.7 m
Rotary Drive - Torque	300 kNm
Rotary Drive - Speed	0-46 rpm
Max. Drilling Diameter	1200 mm
Max. Pull Force (crowd winch & Kelly winch)	780 kN
** with 10 m Kelly extension	

BAT300 FDP DRILLING



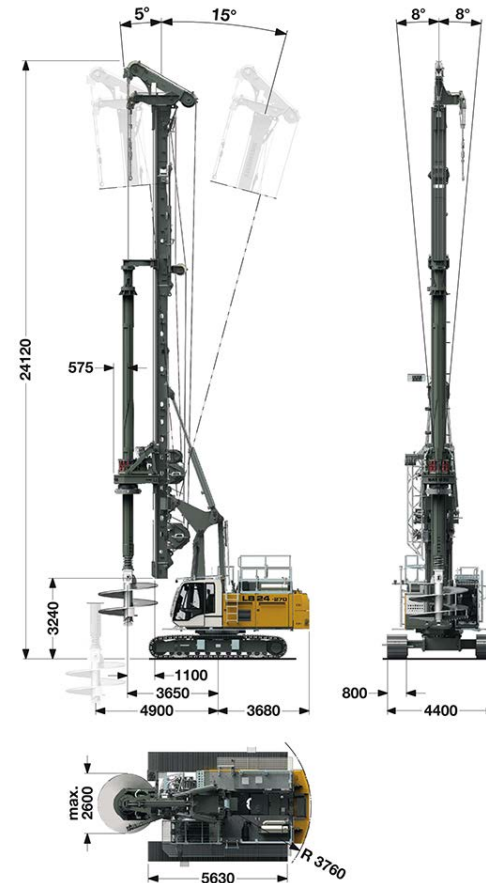
Max Drilling Depth	22.2 m
Drilling Depth with 8m Kelly Ext.	30.2 m
Drilling Depth with 10m Kelly Ext.	32.2 m
Rotary Drive - Torque	300 kNm
Rotary Drive - Speed	0-46 rpm
Max. Drilling Diameter	600 mm
Max. Pull Force (crowd winch & Kelly winch)	780 kN
** with 10 m Kelly extension	



LIEBHERR LB24 Piling Rig

Antares Hire has two LB24's that are used for drilling and deep piling construction. The machine shown has a longer leader with operating height of 24.12 m and our other machine is slightly shorter at 22.85 m.

Operational Dimensions



Modes:

- Kelly
- Continuous Flight Auger (CFA)
- Full Displacement Piles (FDP)
- Olivier Piles
- Down the Hole

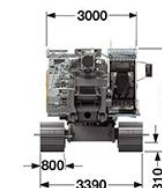
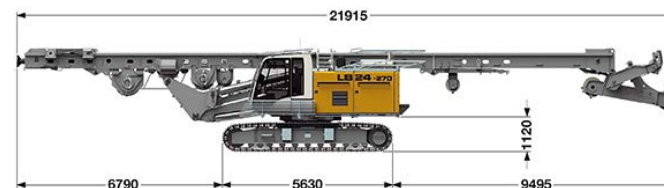
Attachments:

- BAT270

Technical Data

Diesel Engine	Type	Liebherr D936 A7-04
	Power Rating	320 kW (429hp) at 1700 rpm
	Fuel Tank	700 l with reserve warning
Hydraulic System	Pumps for Attachments	2x270 l/min
	Pumps for Kinematics	130 l/min
	Oil Tank	600 l
Crawler	Working Pressure	350 bar
	Drive Speed	0-1.45 km/h
	Track Force	694 kN
Swing Speed	Grousers	3-web grousers, width 800 mm
		0-3.4 rpm
Kelly Winch	Line Pull	210kN (1st layer)
	Rope Diameter	28 mm
	Rope Speed	0-85 m/min
Auxiliary Winch	Line Pull	80kN (1st layer)
	Rope Diameter	20 mm
	Rope Speed	0-82.5 m/min
Rope Crowd System	Crowd Force	320/320 kN (push/pull)
	Line Pull	160 kN
	Rope Diameter	24 mm
	Rope Speed	0-88 m/min
Operating Height		22.85 m
Weight	Operating	75.9 t (basic)
	Transport	54.8 t (basic)
Dimensions	Operating	4400(W) x 8480(L) x 22850(H)
	Transport	3390(W) x 21915(L) x 3400(H)

Transportation Dimensions



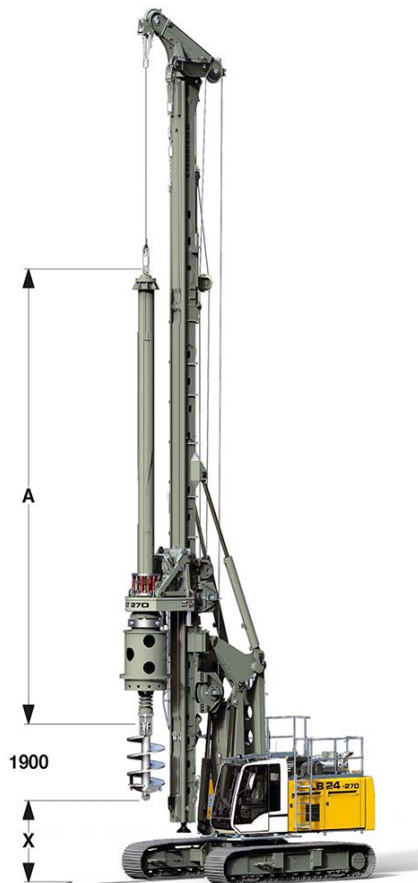
0800 255677

www.antareshire.nz



LIEBHERR LB24 Drilling Modes

BAT270 KELLY DRILLING



When using casing oscillator reduce X by 1500 mm
When using Kelly bar guide, reduce X by 550 mm
A = depends on Kelly bars used

Drilling Depth (with Kelly bars)	22.5-58.6 m
Rotary Drive - Torque	270 kNm
Rotary Drive - Speed	0-46 rpm
Max. Drilling Diameter Uncased	1900 mm
Max. Drilling Diameter Cased	1500 mm

BAT270 CFA DRILLING



Rotary Drive - Torque	270 kNm
Rotary Drive - Speed	0-46 rpm
Drilling Depth (w auger cleaner)	14.6 m
Drilling Depth (w 6 m Kelly ext.)	20.6 m
Drilling Depth (w 8 m Kelly ext.)	22.6 m
Max. Drilling Diameter	1000 mm
Max. Pull Force (crowd winch & Kelly winch)	720 kN

BAT270 FDP DRILLING



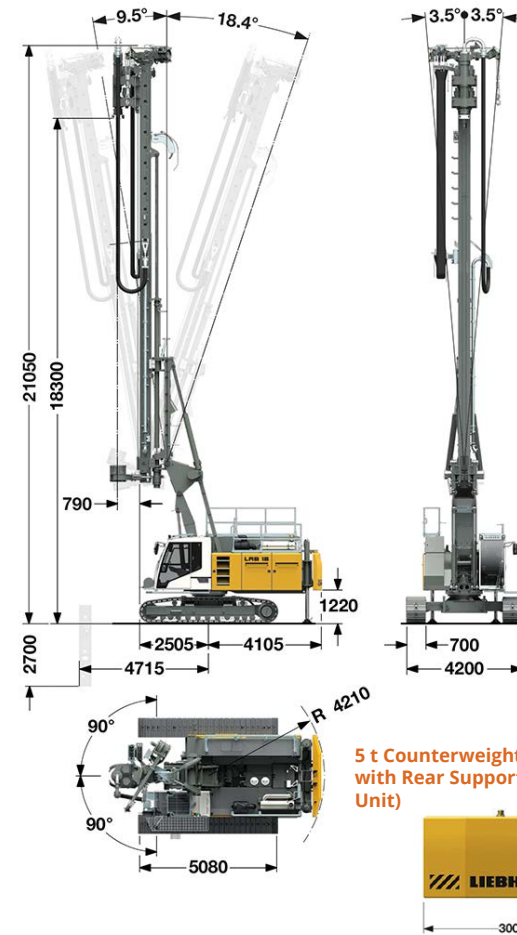
Rotary Drive - Torque	270 kNm
Rotary Drive - Speed	0-30 rpm
Drilling Depth	15.2 m
Drilling Depth (w 6 m Kelly ext.)	21.2 m
Drilling Depth (w 8 m Kelly ext.)	23.2 m
Max. Drilling Diameter	600 mm
Max. Pull Force	720 kN





LIEBHERR LRB18 Piling Rig

Operational Dimensions (with Rear Support Unit)



Modes:

- Continuous Flight Auger (CFA)
- Double Rotary CFA
- Down the Hole
- Full Displacement Piles (FDP)
- RAPs
- VIBE

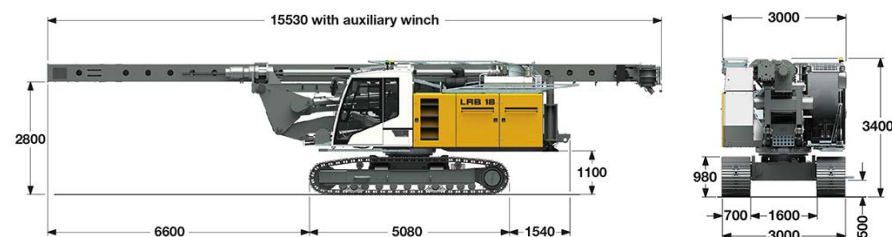
Attachments:

- DBA90
- Vibrator LV20
- H6 Hydraulic Hammer

Technical Data

Diesel Engine	Type	Liebherr D946 A7-04
	Power Rating	390 kW (523 hp) at 1700 rpm
	Fuel Tank	700 l with reserve warning
Hydraulic System	Pumps for Attachments	2x350 l/min
	Pumps for Kinematics	2x180 l/min
	Oil Tank	800 l
	Working Pressure	350 bar
Crawler	Drive Speed	0-2.3 km/h
	Track Force	459 kN
	Grousers	3-web grousers, width 700 mm
Swing Speed		0-3.3 rpm
Auxiliary Winch	Line Pull	50kN (3rd layer)
	Rope Diameter	17 mm
	Rope Speed	0-54 m/min
Rope Crowd System	Crowd Force	150/200 kN (push/pull)
	Line Pull	100 kN
	Rope Diameter	18/20 mm
Operating Height		21.05 m
Weight (w rear support unit)	Operating	52.2 t (with DBA90)
	Transport	47.8 t (w 5 t counterweight)
Dimensions (w rear support unit)	Operating	4200(W) x 8820(L) x 21050(H)
	Transport	3000(W) x 15530(L) x 3400(H)

Transportation Dimensions (with Rear Support Unit)



0800 255677

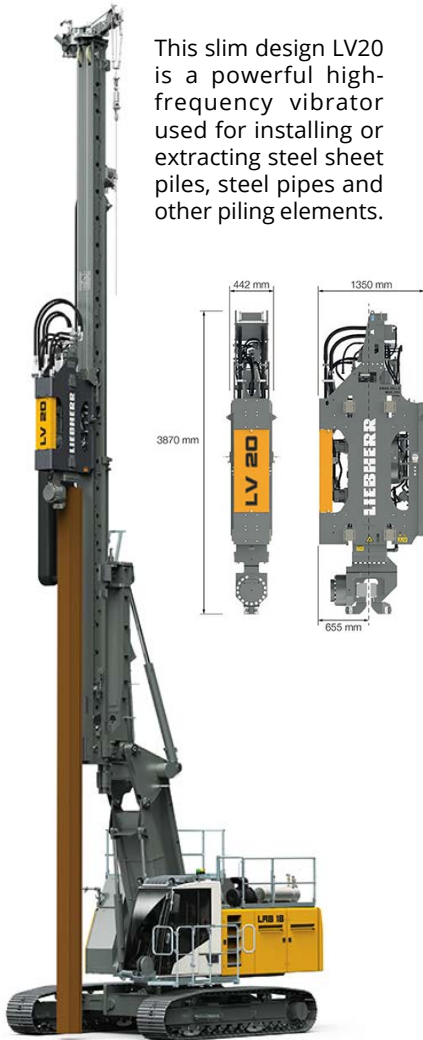
www.antareshire.nz



LIEBHERR LRB18 Pile Driving Modes

LV20 VIBRATOR SLIM DESIGN

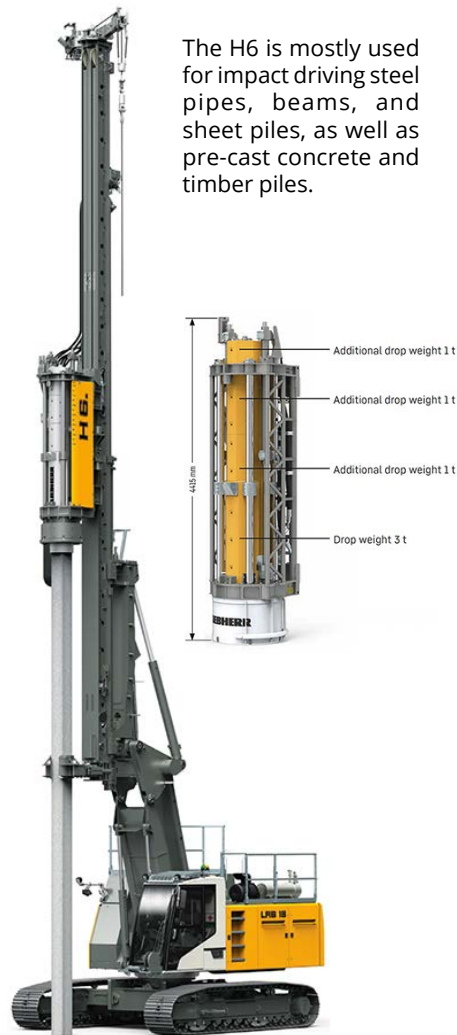
This slim design LV20 is a powerful high-frequency vibrator used for installing or extracting steel sheet piles, steel pipes and other piling elements.



Max. Pile Length	17.2 m
Max. Speed	2300 rpm
Max. Centrifugal Force	1160 kN
Total Weight w Clamp	4600 kg
Dynamic Weight w Clamp	3100 kg

H6 HYDRAULIC HAMMER

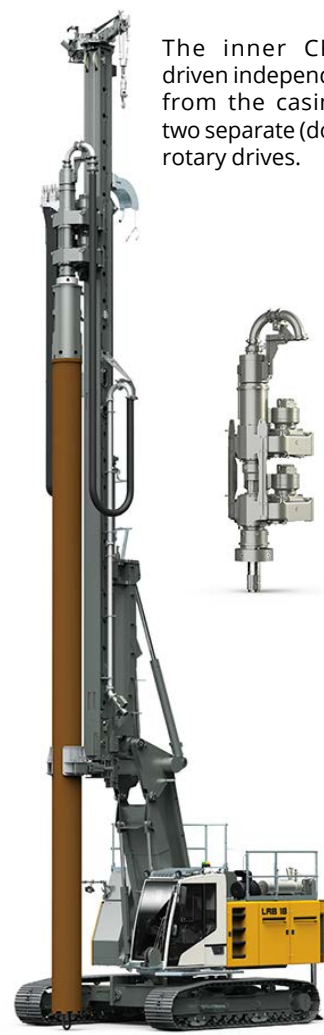
The H6 is mostly used for impact driving steel pipes, beams, and sheet piles, as well as pre-cast concrete and timber piles.



Max. Pile Length	16.4 m
Drop Weight	6000 kg
Max. Rated Energy	72 kN
Blow Rate Max. Energy	50 blows/min
Max. Blow Rate	150 blows/min
Total Weight with 6000 kg drop weight is	9000 kg

DBA90 DOUBLE ROTARY DRIVE

The inner CFA is driven independently from the casing by two separate (double) rotary drives.



Max. Pile Length	17.6 m
Rotary Drive I (casing) - Torque	0-90 kNm
Rotary Drive I (casing) - Speed	0-21 rpm
Rotary Drive II (auger) - Torque	0-68 kNm
Rotary Drive II (auger) - Speed	0-28 rpm
Max. Drilling Diameter	620 mm

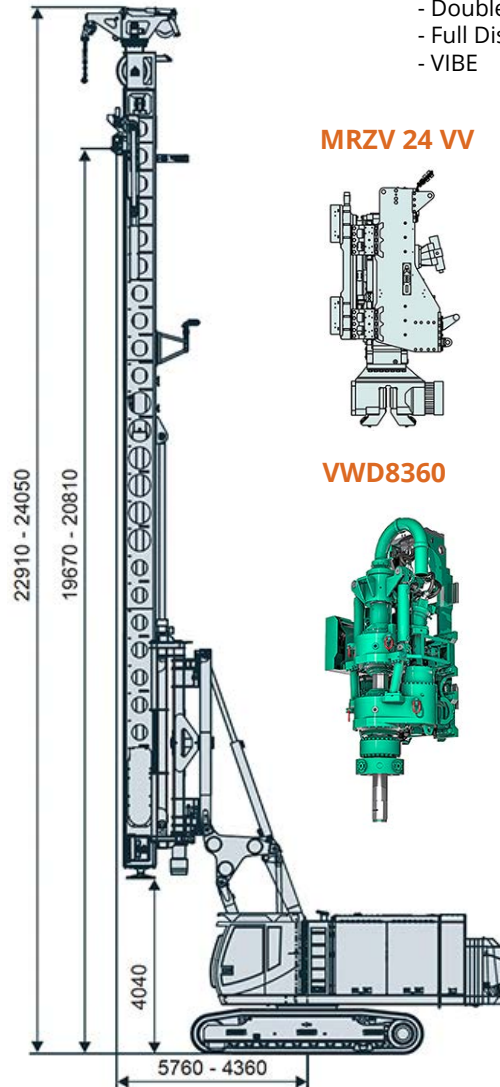




ABI MOBILRAM-System SM 14/18 HD

This rig installs 750 mm CFA and Double Rotary to 17 m deep, sheet piles and RAPs (rammed aggregate piers).

Operating Dimensions



Modes:

- Continuous Flight Auger (CFA)
- Double Rotary
- Full Displacement Piles (FDP)
- VIBE

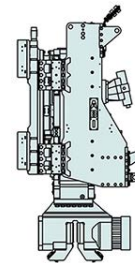
Attachments:

- Vibrator MRZV 24 VV
- VDW8360 Double Rotary
- Single Clamp
- Double Clamp

Tooling:

- CFA
- Double Rotary
- Sheet Piles
- RAPs

MRZV 24 VV



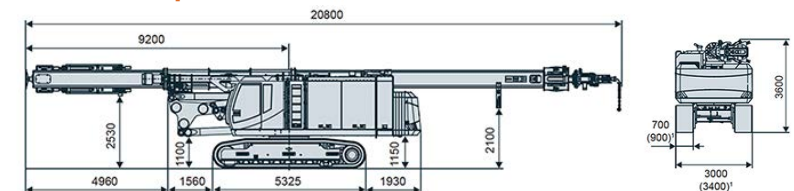
VWD8360



Technical Data

Leader Mast	Total Height	24 m
	Inclination left / right	Grad 4/4
	Inclination forward / backward	Grad 4/5
	Leader Mast Slewing Range	+/- 90 Grad
	Leader Mast Width	600 mm
	Stroke Guiding Carriage	18 m
	Feed Force Up	400 kN
	Feed Force Down	150 kN
	Torque Absorption Max.	200 kNm
Auxiliary Winch	Max Load Capacity	15000 kg
	Line Pull at min. Reach	50 kN
	Rope Diameter	14 mm
Kelly Winch	Rope Speed	35 m/min
	Line Pull at min. Reach	120 kN
	Rope Diameter	22 mm
Carrier SR35T-E HD	Rope Speed	65 m/min
	Diesel Engine	CAT C18
	Power Rating	470 kW
Undercarriage T41/380-V	Working Pressure	330 bar
	Hydraulic Pumps	2x410, 1x200, 1x125 l/min
	Hydraulic Tank	715 / 860 l
	Diesel Tank	810 l
	Drive Speed	0-2.0 km/h
Operating Weight	Pulling Force	450/570 kN
	Track Shoes	700 mm
	with Winch & Vibrator	85 t
Transport Weight	Telescopic Leader Mast	79 t
	Detachable Counterweights	15.4 t
	Slewing Winch	370 kg

Transportation Dimensions



0800 255677

www.antareshire.nz

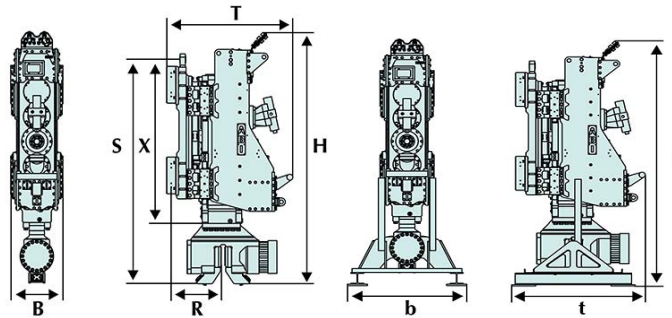


ABI MOBILRAM Pile Driving and Drilling Modes

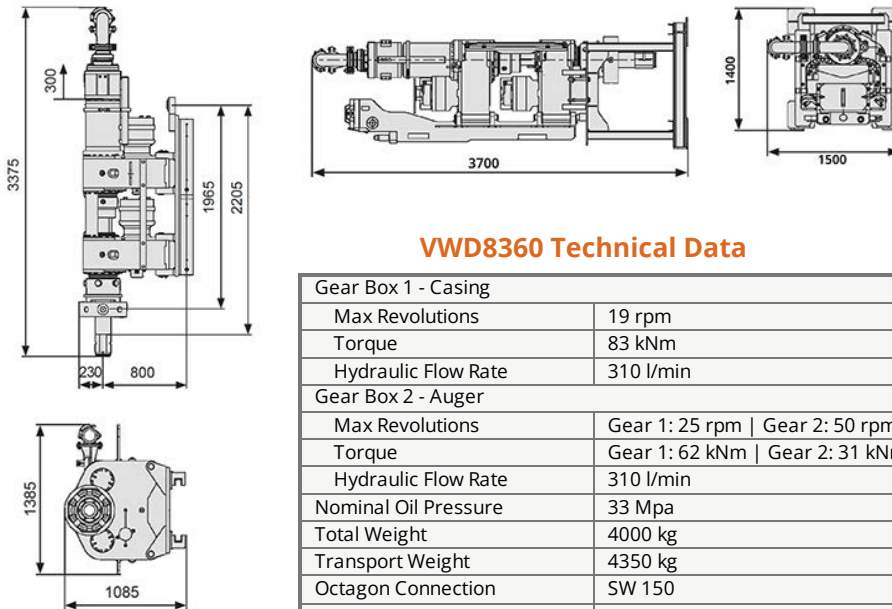
MRZV 24 VV Technical Data

Static Moment	0-24 kgm
Dynamic Mass	2840 kg
Amplitude x 2	16.9 mm
Nominal Revolutions	1950 rpm
Maximum Revolutions	2600 rpm
Centrifugal Force at Nominal Frequency	1000 kN
Max. Centrifugal force	1200 kN
Max. Static Extraction Force	200 kN
Oil Pressure	35 Mpa
Installed Power of Carrier	433-533 kW
Total Weight	4250 / 4470 kg
Max. Weight of Piles	3000 kg
Height (H)	2870 mm
Width (B)	690 mm
Depth (T)	1580 mm
Drive to Guiding Axle (R)	650 mm
Locking to Bottom (S)	2530 mm
Locking to Vibrator Body (X)	1800 mm
Transport Dimensions h / b / t	2590 / 1030 / 2950 mm

MRZV 24 VV Operating & Transportation Dimensions

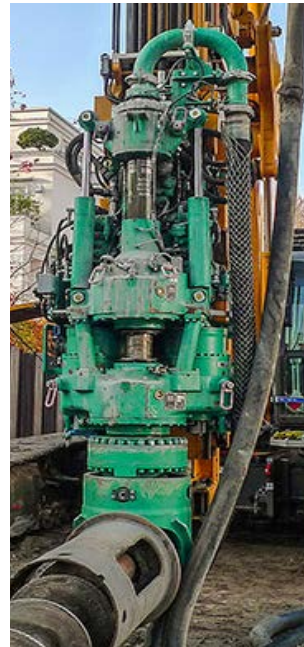


VWD8360 Operating & Transportation Dimensions



VWD8360 Technical Data

Gear Box 1 - Casing	
Max Revolutions	19 rpm
Torque	83 kNm
Hydraulic Flow Rate	310 l/min
Gear Box 2 - Auger	
Max Revolutions	Gear 1: 25 rpm Gear 2: 50 rpm
Torque	Gear 1: 62 kNm Gear 2: 31 kNm
Hydraulic Flow Rate	310 l/min
Nominal Oil Pressure	33 Mpa
Total Weight	4000 kg
Transport Weight	4350 kg
Octagon Connection	SW 150
Flushing Head Diameter	DN 100

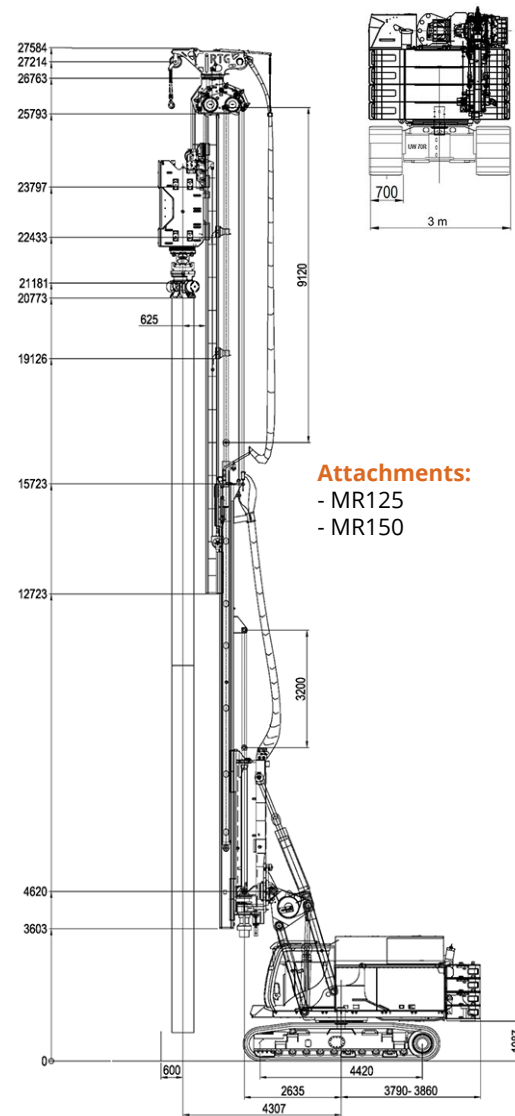




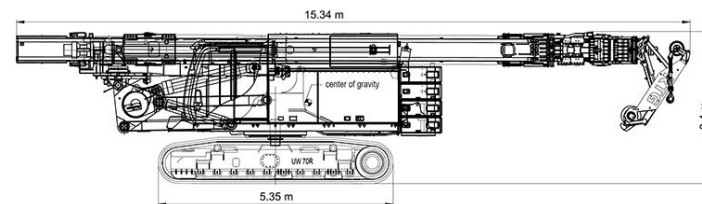
BAUER RG21T Telescopic Leader Rig

Specifically set up for installing sheet piles and RAPs on a mast with 14 t down force and 26 t uplift.

Operating Dimensions



Transportation Dimensions



Technical Data

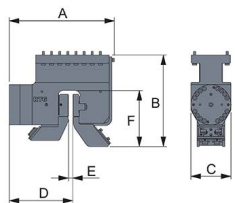
Telescopic Leader	Total Height (max)	27.5 m
	Length of Mast	14.8 - 23.9 m
	Max Pile Length	21.4 m
	Turning Angle - Left/Right	90°
	Working Radius	4.3 to 6.1 m
	Swing Radius	3.79 / 3.86 mm
	Crowd Force Push	140 kN
Base Carrier BS 65 RS	Crowd Force Pull	260 kN
	Allowable Torque	150 kNm
	Diesel Engine	CAT C18
	Power Rating	570 kW (764 hp)
	Rotation Speed	1,800 rpm
	Hydraulic Flow Rate	850 l/min
	Hydraulic Tank	980 l
Undercarriage	Hydraulic Oil Cooler	2x100 kW
	Diesel Tank	730 l
	Crawler Speed	0-1.46 km/h
	Crawler Width	3 - 4.5 m
	Crawler Length	5.35 m
Operating Dimensions	Shoe Width	700 mm
	Towing Force	504 kN
	Max Working Height	26.8 m
Transportation Dimensions	Min Working Width	3 m
	Weight	79 t
	Length	15.3 m
	Width	3 m
	Height	3.4 m
	Weight (with aux. winch)	71 t
	Counterweight	3x1.8 + 4.9 t

BAUER RG21T Vibratory Hammers

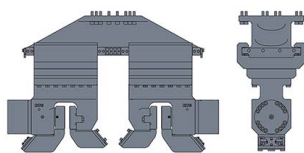
Technical Data

MR 125 V	Height (A)	3200 mm
	Width (B)	530 mm
	Depth (C)	1400 mm
	Distance to Wall (D)	670 mm
	Static Moment	0-12.6 kg
	Hydraulic Power at Vibrator	460 kW
	Max. Rotation Speed	2300 rpm
	Max. Centrifugal Force	1250 kN
	Max. Weight of Pile	5000 kg
	Clamp Assembly	MRZ 130
	Dimensions A / B / C / D / E / F	880 / 760 / 360 / 580 / 39 / 477 mm
	Clamping Force	1700 kN
	Clamping Pressure	350 bar
	Total Weight	4700 kg
MR 150 AVM	Transport Dimensions (E / F / G)	1200 / 1400 / 3300 mm
	Transport Weight	5050 kg
	Height (A)	3200 mm
	Width (B)	530 mm
	Depth (C)	1400 mm
	Distance to Wall (D)	670 mm
	Static Moment	21.6 kg (standard mode) 28.4 kg (high amplitude mode) 18.2 kg (high speed mode)
	Hydraulic Power at Vibrator	480 kW
	Max. Rotation Speed	2300 rpm (standard mode) 2200 rpm (high amplitude mode) 2500 rpm (high speed mode)
	Max. Centrifugal Force	1250 kN (standard mode) 1500 kN (high amplitude mode) 1250 kN (high speed mode)
	Clamp Assembly	MRZ 150
	Dimensions A / B / C / D / E / F	967 / 840 / 360 / 585 / 39 / 515 mm
	Clamping Force	1800 kN
	Clamping Pressure	350 bar
	Transport Dimensions (E / F / G)	1200 / 1400 / 3300 mm
	Transport Weight	5350 kg

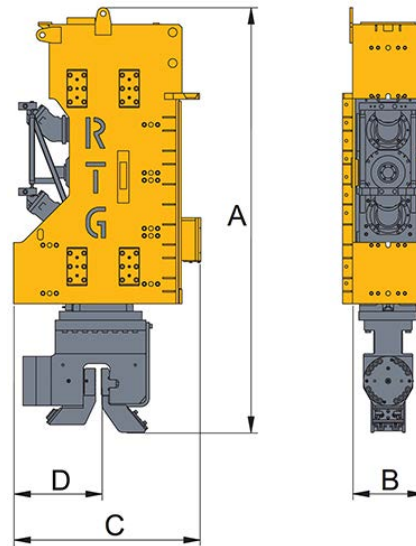
Single Clamp



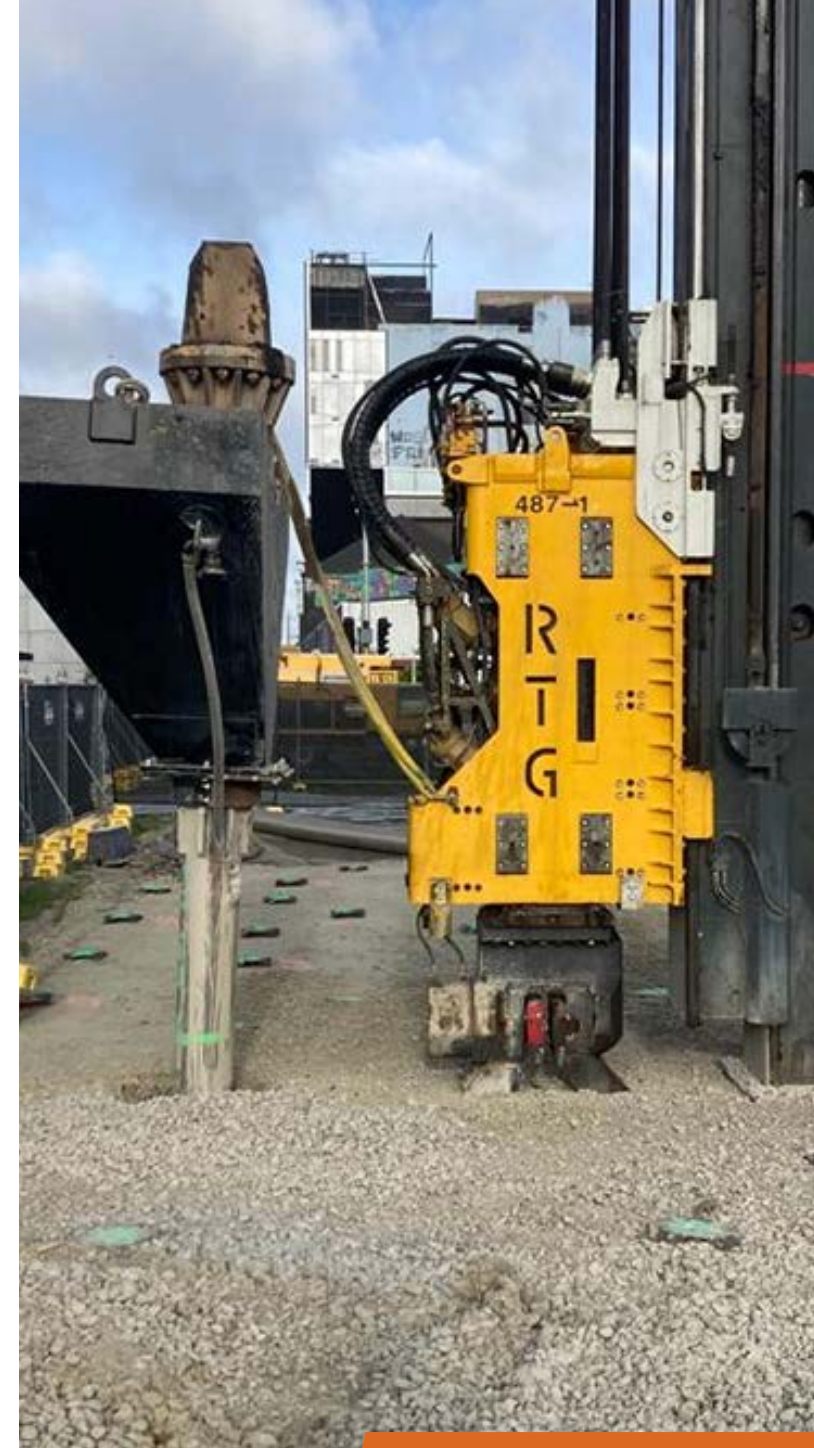
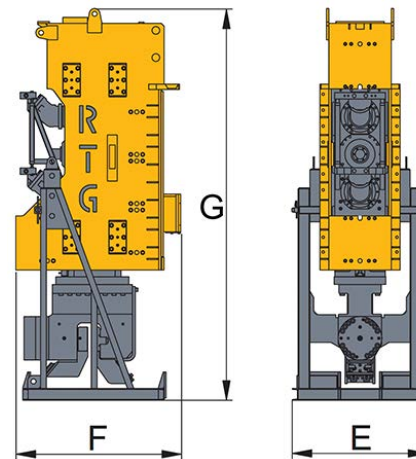
Double Clamp



Operating Dimensions



Transportation Dimensions

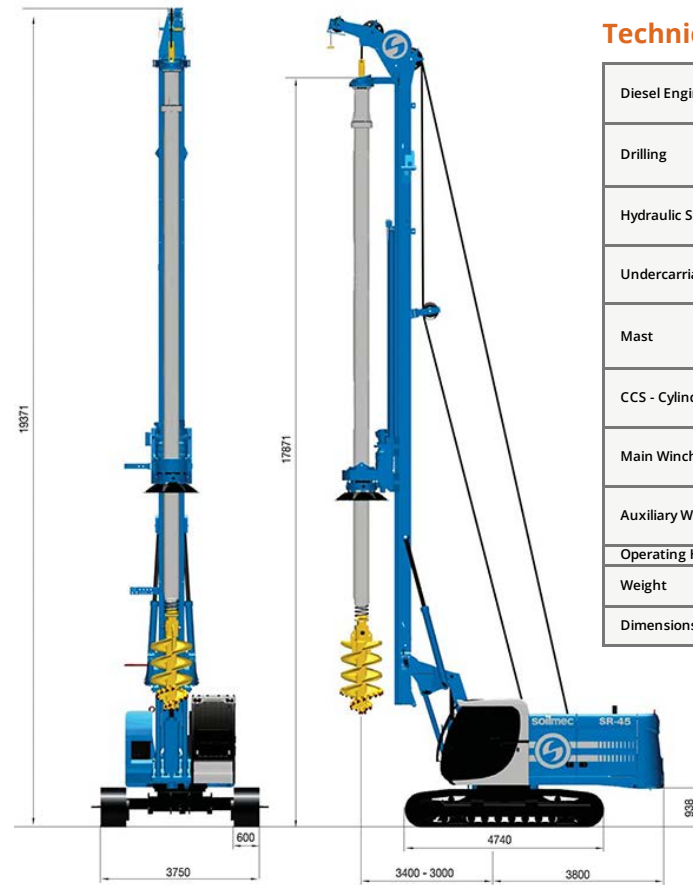




SOILMEC SR45 Piling Rig - CCS

Antares Hire has two Soilmec SR45 versions, a Cylinder Crowd System and Winch Crowd System.

Operational Dimensions - Cylinder Crowd System (CCS)



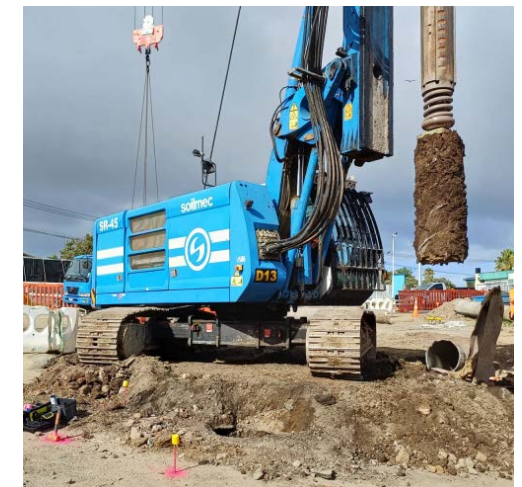
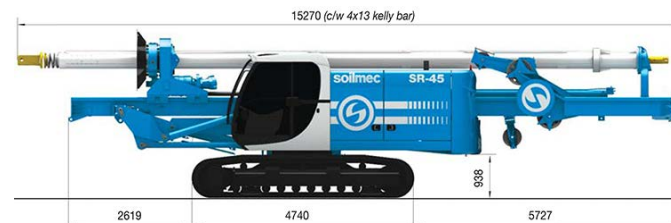
Technical Data

Diesel Engine	Type	Cummins QSB 6.7
	Power Rating	201 kW (269hp) at 2000 rpm
	Fuel Tank	380 l
Drilling	Max Drilling Depth	32.1 m (4x9 kelly)
	Max Pile Diameter	1500 mm (along mast) 2000 mm (below mast)
Hydraulic System	Hydraulic Pressure Set	30,5 Mpa
	Flow Rates	2x214 l/min
	Oil Tank	450 l
Undercarriage	Drive Speed	0-2 km/h
	Track Force	386 kN
	Grousers	triple grouser track shoes, width 600 mm
Mast	Inclination	5° (backward)
		4° (forward)
		3° (lateral)
CCS - Cylinder Crowd System	Crowd Force Pull	140/207 kN (down/up)
	Stroke	5100 mm
	Speed (up/down)	17.4 m/min Fast 18.8 m/min
Main Winch	Line Pull (1st layer)	165 kN
	Rope Diameter	24 mm
	Rope Speed	78 m/min
Auxiliary Winch	Line Pull	65 kN
	Rope Diameter	18 mm
	Rope Speed	81 m/min
Operating Height		19.37 m
Weight	Operating	40.5 t (c/w 4x9 kelly bar)
	Transport	40.5 t (c/w 4x9 kelly bar)
Dimensions	Operating	3750(W) x 7200(L) x 19371(H)
	Transport	2550(W) x 15270(L) x 3400(H)

Modes:

- Kelly
- Down the Hole

Transportation Dimensions (CCS & WCS Versions)



0800 255677

www.antareshire.nz



SOILMEC SR45 Piling Rig - WCS

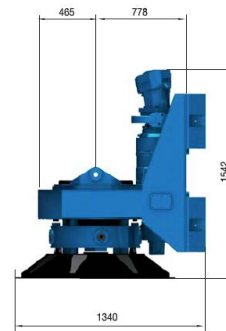
Operational Dimensions - Winch Crowd System (WCS)

Modes:

- Kelly

Technical Data

Diesel Engine	Type	Cummins QSB 6.7
	Power Rating	201 kW (269hp) at 2000 rpm
	Fuel Tank	380 l
Drilling	Max Drilling Depth	63 m (friction kelly)
	Max Pile Diameter	1300 mm (along mast)
		2000 mm (below mast)
Hydraulic System	Hydraulic Pressure Set	30,5 Mpa
	Flow Rates	2x214 l/min
	Oil Tank	450 l
Undercarriage	Drive Speed	0-2 km/h
	Track Force	386 kN
	Grousers	triple grouser track shoes, width 600 mm
Mast	Inclination	5° (backward)
		4° (forward)
		3° (lateral)
WCS - Winch Crowd System	Crowd Force Pull	240/240 kN (down/up)
	Stroke	14500 mm
	Speed (up/down)	28 m/min Fast 28 m/min
Main Winch	Line Pull (1st layer)	165 kN
	Rope Diameter	24 mm
	Rope Speed	78 m/min
Auxiliary Winch	Line Pull	65 kN
	Rope Diameter	18 mm
	Rope Speed	81 m/min
Operating Height		19.37 m
Weight	Operating	42 t (c/w 4x9 kelly bar)
	Transport	42 t (c/w 4x9 kelly bar)
Dimensions	Operating	3750(W) x 7200(L) x 19371(H)
	Transport	2550(W) x 15270(L) x 3400(H)



Rotary Drive:

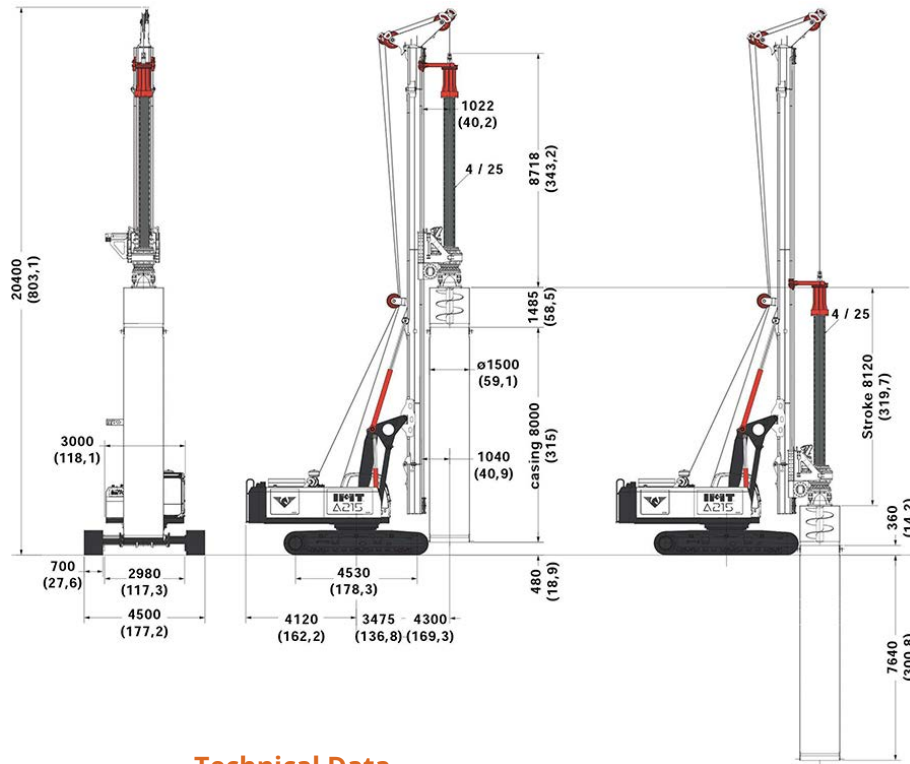
Max torque (theoretical)	185 kNm
Rated torque (theoretical)	161 kNm
Speed of rotation (max)	47 rpm
Spin-off speed	146 rpm
Weight c/w cradle	2715 kg





IMT A215 Piling Rig

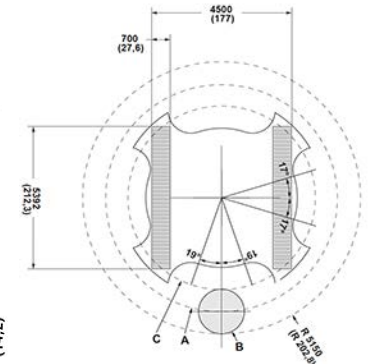
Operational Dimensions (Crowd Winch Version)



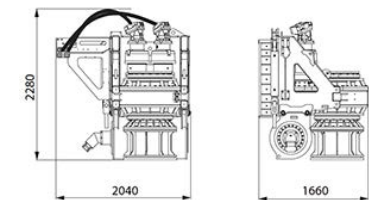
Modes

- Kelly
- Continuous Flight Auger (CFA)
- Full Displacement Piles (FDP)
- Down the Hole

Crowd Winch Working Area



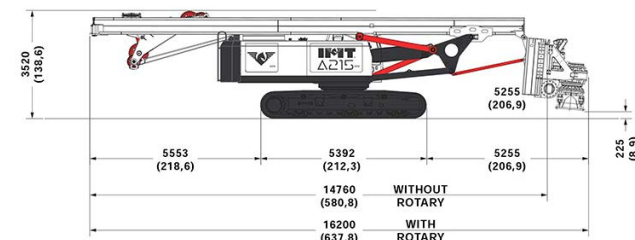
Rotary



Technical Data

Base	Engine	Cummins QSL9 TierIII/TierIV
	Power Rating	254 kW (340 hp) at 1800 rpm
	Fuel Tank	530 l
	Undercarriage Length	5392 mm
	Shoe	700 mm
Drilling	Max Drilling Depth	42 m
	Max Pile Diameter	1700 mm
	Forward Inclination	4°
	Backward Inclination	15°
Mast	Lateral Inclination	5°
	Max Pile Diameter	2000 mm
	Kelly Crowd Push	260 kN
	Kelly Crowd Pull	260 kN
Winch Crowd System	Stroke	11000 mm
	Casing Length	8000 mm
	Operating Height	20.4 m
Operating Weight	Operating	60 t (w standard kelly bar)
	Rotary	6.1 t
	Counterweight	8 t
Dimensions	Operating	4500(W) x 8420(L) x 20400(H)
	Transport (w Rotary)	4500(W) x 16200(L) x 3520(H)

Transportation Dimensions (Crowd Winch)



0800 255677

www.antareshire.nz



GEAX EK110 Piling Rig

The EK110 has a similar structure to an excavator with a long boom supporting the mast to provide a wide range of mast positioning and independent vertical adjustments.

Modes:

- Open Kelly
- Continuous Flight Auger (CFA)
- Down-the-Hole Hammer

Tooling:

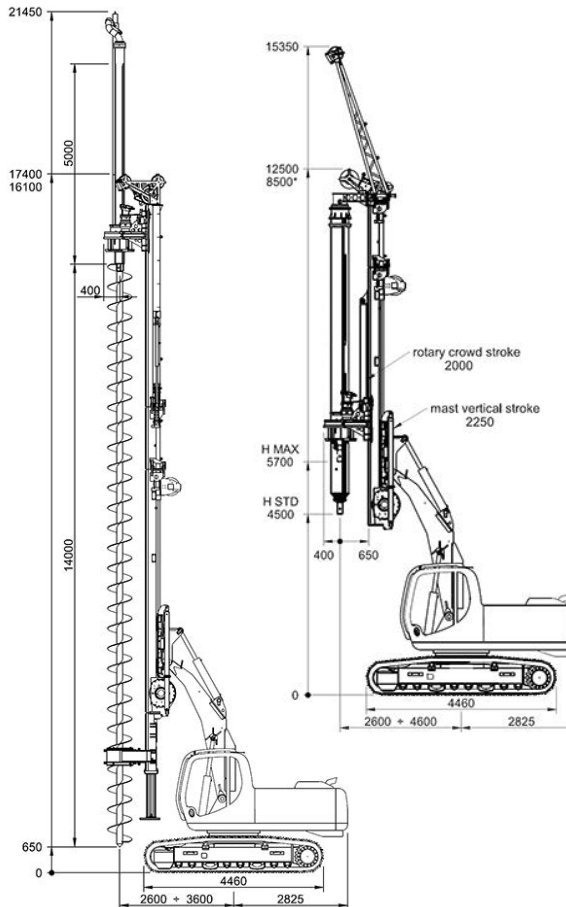
Core Barrels, Clean-out Buckets, Grooving Tools, Down-the-Hole, CFA, FDP, Augers, Drill Buckets



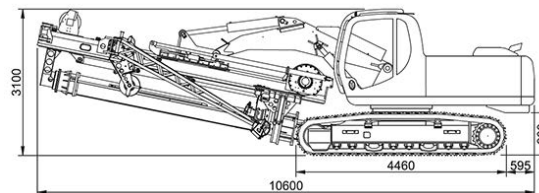
Technical Data

Hitachi ZX210 Base	Engine	Isuzu AM-4HK1X
	Engine Power	122 kW
	Undercarriage Length	4504 mm
	Undercarriage Width	2490 mm
Hydraulic System	Shoe Width	600 mm
	Main Pump	2x212 l/min
	Auxiliary Pump	2x33.6 l/min
Mast	Hydraulic Pressure	320 bar
	Forward Inclination	20°
	Backward Inclination	20°
	Lateral Inclination	5°
Rotary	Mast Vertical Stroke	2250 mm
	Nominal Torque	110 kNm
	Drilling Speed	10/80 rpm
	Spin Off Speed	80 rpm
Winches	Main Winch Line Pull	Kelly 120 kN CFA 120x3 kN
	Aux Winch Line Pull	37 kN
Crowd System	Pull Down Force	Kelly 150 kN CFA 150 kN
	Extraction Force	Kelly 180 kN CFA 360 kN
	Total Rotary Stroke	Kelly 4250 mm CFA 14000 mm
Excavation	Max Pile Diameter	Kelly 1800 mm CFA 800 mm
	Max Pile Depth	Kelly upto 40 m CFA upto 20 m
Transportation Dimensions	Length	10600 mm
	Width	2490 mm
	Height	3100 mm
	Weight	Kelly 30 t CFA 29 t

Operating Dimensions



Transportation Dimensions

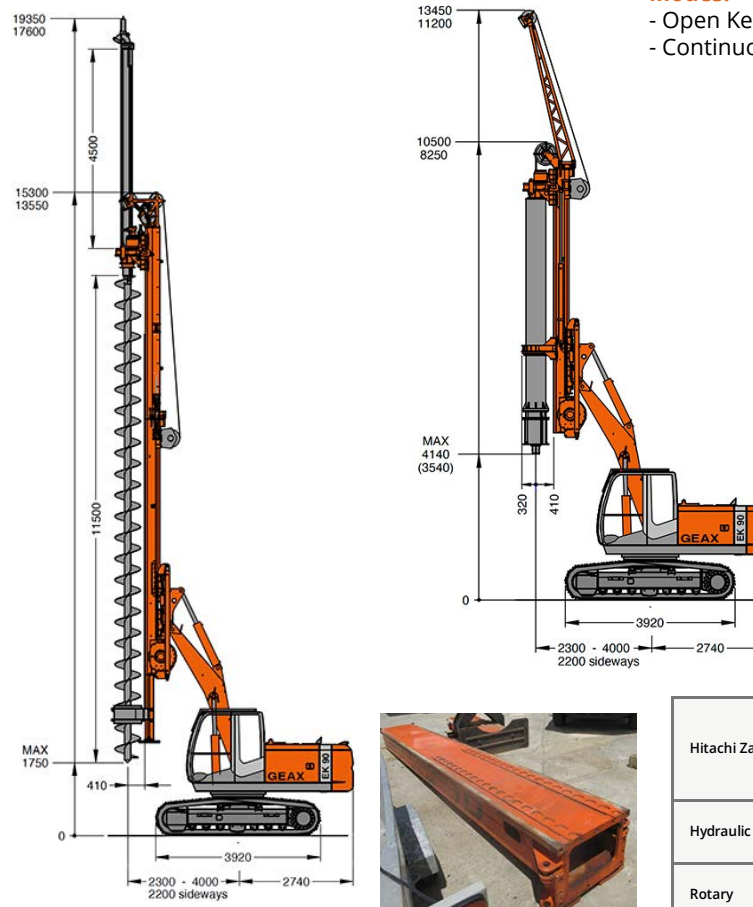




GEAX EK90 Piling Rig

Multi-purpose piling rig installs bored piles up to 1.5 m diameter and 29 m depth.

Operating Dimensions



Modes:

- Open Kelly
- Continuous Flight Auger (CFA)

Tooling:

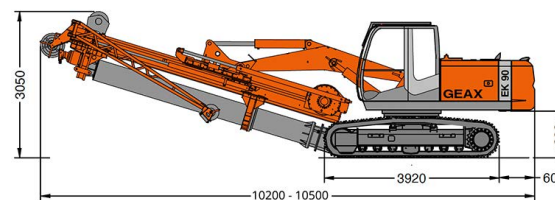
Core Barrels, Clean-out Buckets, Grooving Tools, CFA, Augers, Drill Buckets



Technical Data

Hitachi Zaxis 160LC-3 Base	Engine	Isuzu AI-4JJ1X
	Engine Power	90.2 kW (121 hp)
	Undercarriage Length	3920 mm
	Undercarriage Width	2490 mm
Hydraulic System	Shoe Width	500 mm
	Main Pump	2x191 l/min
Rotary	Auxiliary Pump	2x33.6 l/min
	Hydraulic Pressure	320 bar
Winches	Nominal Torque	82 (90) kNm
	Drilling Speed	6/85 rpm
	Rotary + Mast Stroke	Kelly 3850 mm CFA 12750 mm
	Main Winch Line Pull	Kelly 120 kN CFA 240 kN
Crowd System	Main Winch Rope Diameter	Kelly 22 mm CFA 20 mm
	Aux Winch Line Pull	Kelly 37 kN
Excavation	Aux Winch Rope Diameter	14 mm
	Pull Down Force	100 kN
Transportation Dimensions	Extraction Force	180 kN
	Max Pile Diameter	Kelly 1500 mm CFA 750 mm
	Max Pile Depth	Kelly 31 m CFA 16.5 m
	Length	Kelly 10.5 m CFA 10.2 m
Transportation Dimensions	Width	2490 mm
	Height	3050 mm
	Weight	Kelly 26 t CFA 25 t

Transportation Dimensions



0800 255677

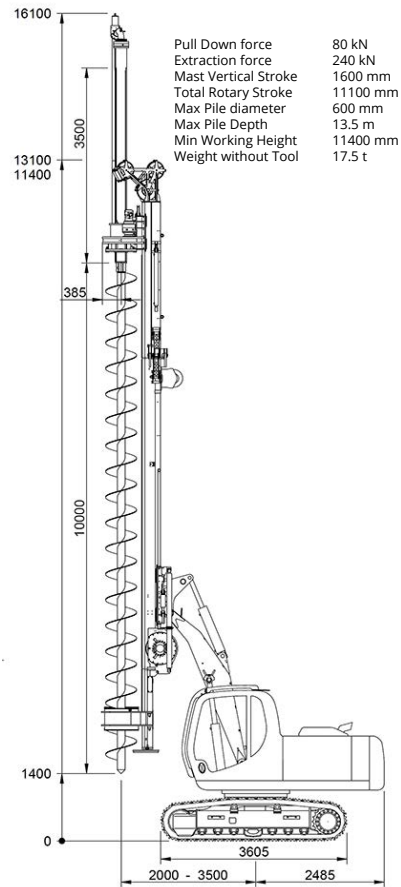
www.antareshire.nz



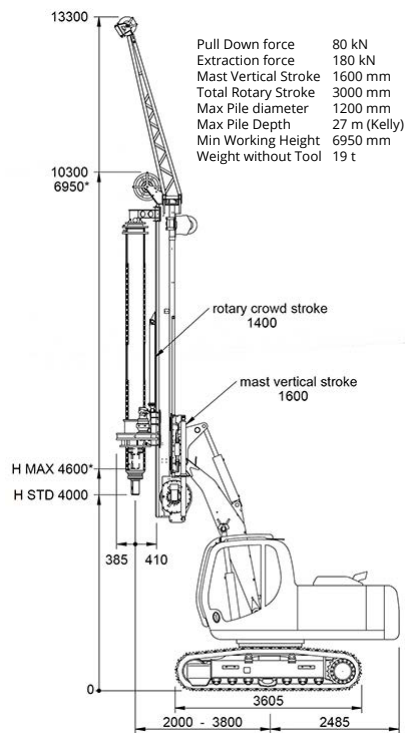
GEAX EK60 Piling Rig

Multi-purpose piling rig with modular drilling components making conversion between modes efficient.

Operating CFA Mode



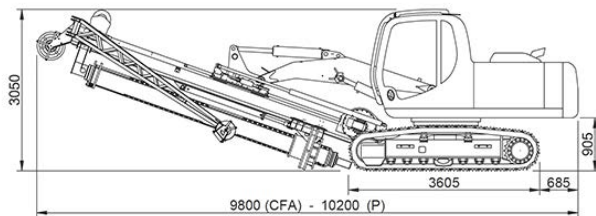
Operating Kelly Mode



Technical Data

Crawler - Doosan DX140LC-5	Engine	Perkins 1204F
	Engine Power	85.8 kW
	Fuel Tank	265 l
	Hydraulic Tank	150 l
	Speed	2.9 - 4.9 km/h
Mast	Shoe Width	600 mm
	Forward Inclination	20°
	Backward Inclination	20°
	Lateral Inclination	6.5°
	Mast Vertical Stroke	1600 mm
Rotary	Nominal Torque	56 kNm
	Drilling Speed	10/60 rpm
	Spin Off Speed	60 rpm
Winches	Main Winch Line Pull	Kelly 80 kN CFA 80x3
	Aux Winch Line Pull	Kelly 25 kN CFA 25
Transportation Dimensions	Length	Kelly 10.2 m CFA 9.8 m
	Width over Tracks	2.54 m
	Height	3.05 m
	Weight	Kelly 19 t CFA 17.5 t

Transportation Dimensions

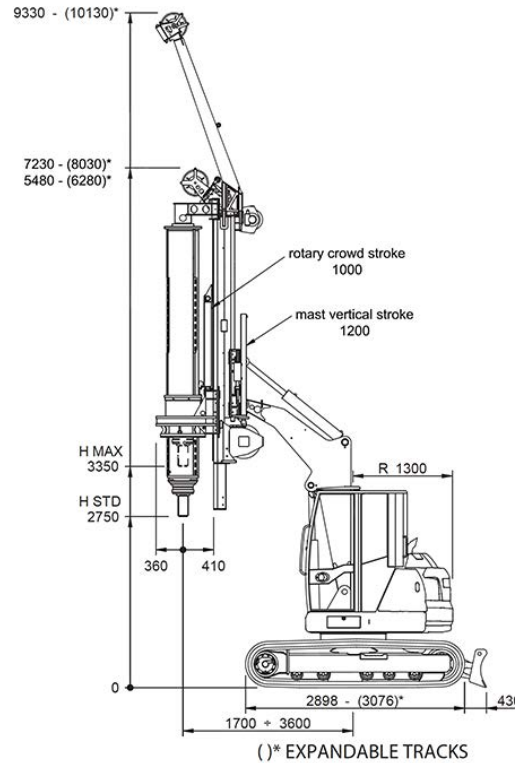




GEAX EK40 Piling Rig

The Geax EK40 is a small and versatile Kelly drilling rig with a maximum depth of 22 m.

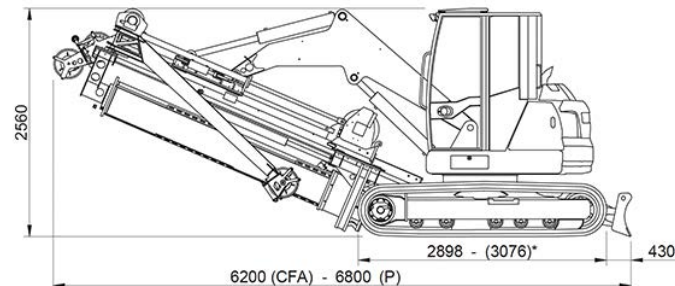
Operating Dimensions - Kelly Mode



Technical Data

Base	Engine	YANMAR 4TNV98
	Engine Power	46.5-63.2 kW
	Undercarriage Length	2.89 - 3.08 m
	Width over Tracks	2.3 m
Hydraulic System	Shoe Width	450 mm
	Main Pump	185 l/min
	Auxiliary Pump	20 l/min
	Hydraulic Pressure	280 bar
Mast	Forward Inclination	20°
	Backward Inclination	20°
	Lateral Inclination	6°
	Mast Vertical Stroke	1200 mm
Rotary	Nominal Torque	34 kNm
	Drilling Speed	10 rpm
	Spin Off Speed	60 rpm
Winches	Main Winch Line Pull	Kelly 55 kN
	Aux Winch Line Pull	Kelly 16 kN
Crowd System	Pull Down Force	Kelly 60 kN
	Extraction Force	Kelly 60 kN
	Total Rotary Stroke	Kelly 2200 mm
Excavation	Max Pile Diameter	Kelly 1000 mm
	Max Pile Depth	Kelly upto 22 m
	Min Working Height	Kelly 5.48 m
Transportation Dimensions	Length	Kelly 6.8 m
	Width over Tracks	2.32 m
	Height	2.56 m
	Weight	Kelly 12.5 t

Transportation Dimensions



0800 255677

www.antareshire.nz



GEAX XD8 Mini Piling Rig

The Geax XD8 installs 600 mm piles to 15 m deep. It is one of the smallest hydraulic piling rigs in the world, designed to work in extremely tight spaces - 1.55 m wide and 2.8 m headroom. Although it's compact, it has all the features of a larger rig, including auxiliary winch, depth meter, spin off speed and winch limit switches.

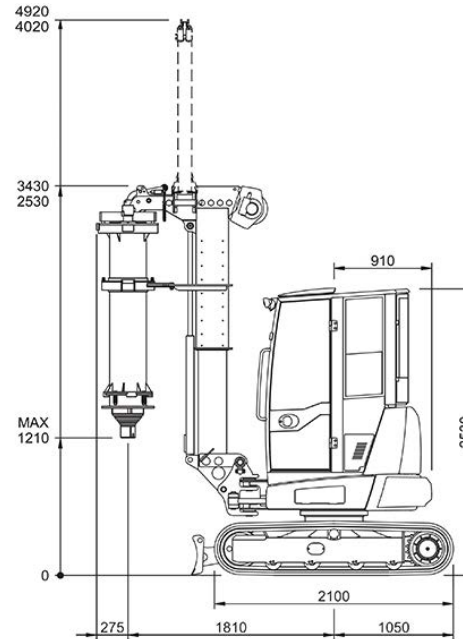
Technical Data

Mast	Total Height	2.5 m
	Inclination left / right	4°
	Inclination forward / backward	4°
	Vertical Stroke	900 mm
Base	Diesel Engine	KUBOTA D1503-M
	Power Rating	29.3 kW (33.4 hp)
	Undercarriage Length	2100 mm
	Width over Tracks	1550 mm
Hydraulic System	Shoe Width	280 mm
	Main Pump	105 l/min
	Auxiliary Pump	10 l/min
Rotary	Hydraulic Pressure	250 bar
	Nominal Torque	8 kNm
	Drilling Speed	20/40 rpm
Winches	Spin off Speed	40 rpm
	Main Winch Line Pull	15 kN
Crowd System	Aux Winch Line Pull	5 kN
	Pull Down Force	25 kN
Excavation	Extraction Force	40 kN
	Max Pile Diameter	600 mm
Operating Dimensions	Max Pile Depth	12 m
	Min Working Height	2.8 m
Transportation Dimensions	Min Working Width	1.55 m
	Length	3.14 m
	Width	1.55 m
	Height	2.53 m
Weight		2.53 m
		3.8 t

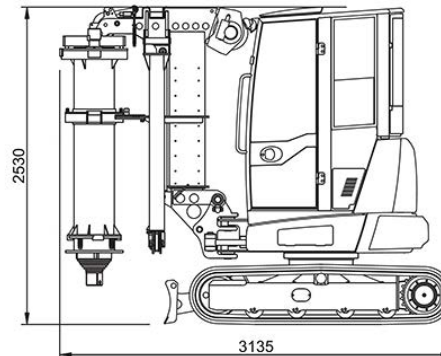
Drilling attachments include a rotary system with telescopic Kelly bar mounted on the mast with a gimbal joint. The hydraulic cylinder and interlocking Kelly bar provide the necessary crowd force required for harder soils.



Operating Dimensions



Transportation Dimensions





MAGNI RTH 6.30 ROTATIONAL TELEHANDLER

The Magni RTH 6.30 is a tough, high-performance rotating telescopic handler. It can lift loads up to a height of 30 m, and is equipped with scissor stabilizers to ensure greater safety and stability during 360° working manoeuvres.

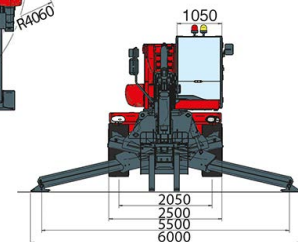
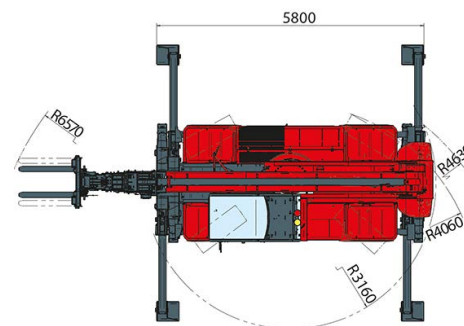
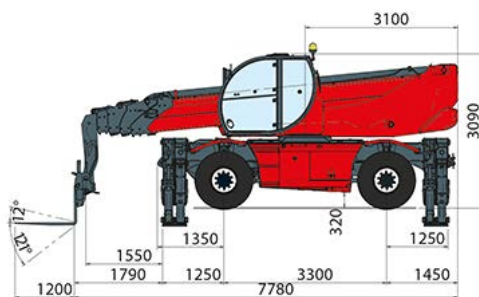
Technical Data

Dimensions	Overall length	7800 mm
	Overall height	3120 mm
	Overall width	2530 mm
	Scissor stabiliser footprint	5800 x 6000 mm
Working Range	Max. lifting height	29.9 m
	Max. lifting capacity	6000 kg
	Pick up & carry capacity	5000 kg
	Lift capacity at max. height	2500 kg
	Max. forward reach	26 m
	Rotation	360°
	Turning Radius (end of forks)	6570 mm
	Drawbar pull	80 kN
	Fuel Tank	270 l
	Ground clearance	310 mm
Total Operating Weight (unladen)		21830 kg
Travel Speed		40 kph

Refer to the technical specification for full details on performance, dimensions, working range and lifting capacity as machine specifications can vary.



Dimensions



Attachments

- 2 Person Man Cage
- Telehandler Forks : 6000 kg capacity @ 600 mm / 410 kg
- Ripamonti Mast & Motor
- 5 t Winch

0800 255677

www.antareshire.nz



RIPAMONTI SDI180 ROPE ACCESS RIG

The SDI 180 Speedy Hydraulic Drill has been designed to be light and compact to enable it to be used in difficult or remote areas, such as rock walls or places that can only be reached by foot or rope access.

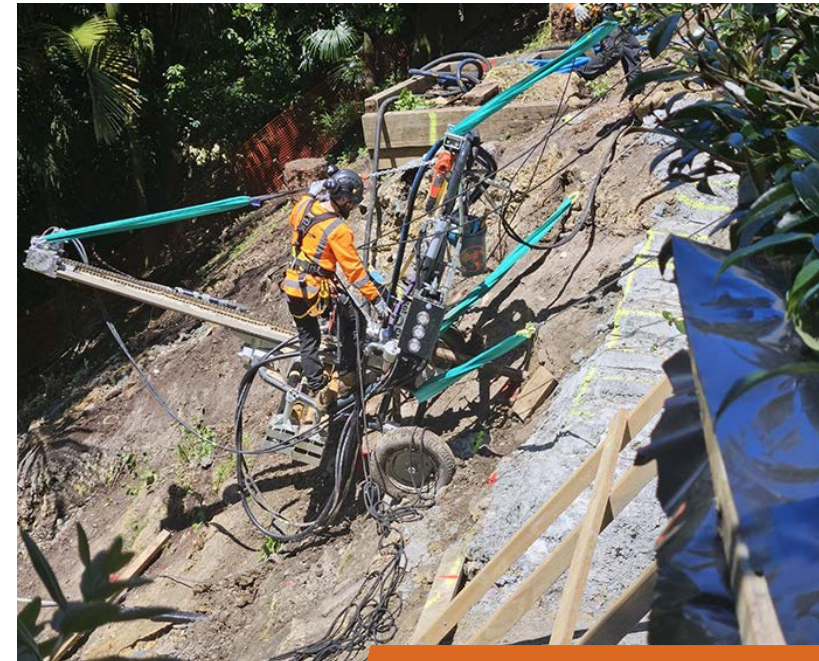
It is designed to use DTH hammers and light drifters, and the drill mast is easy to fix to any scaffolding or to a special tubular sled.

Technical Data

Model	SDI / 2300
Hole Diameter	30-130 mm
Drilling Depth	up to 30 m
Stroke	2300 mm
Pull Back	1500 kg
Mast Length	3300 mm
A Frame & Mast Weight (without DTH hammer)	210 kg

Specialist Access Tools available with this rig:

- Four Post Portable Hoist with Stand
- Tirfor 1.6 t Hoist with rope
- Tirfor 3.2 t Hoist with 24 m rope and shackles
- Piano Dollie 10" puncture proof wheel
- 3.5 m TEI Rock Drill
- Horizontal Directional Drills
- DTH Bit - 100 mm DHD3.55 IR3.5 Shank Domed Buttons Concave
- 3" DTH Hammer DHD3.5 Shank 2 3/8 regular pin





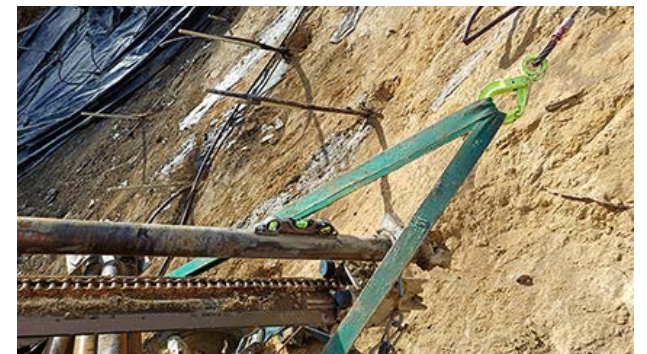
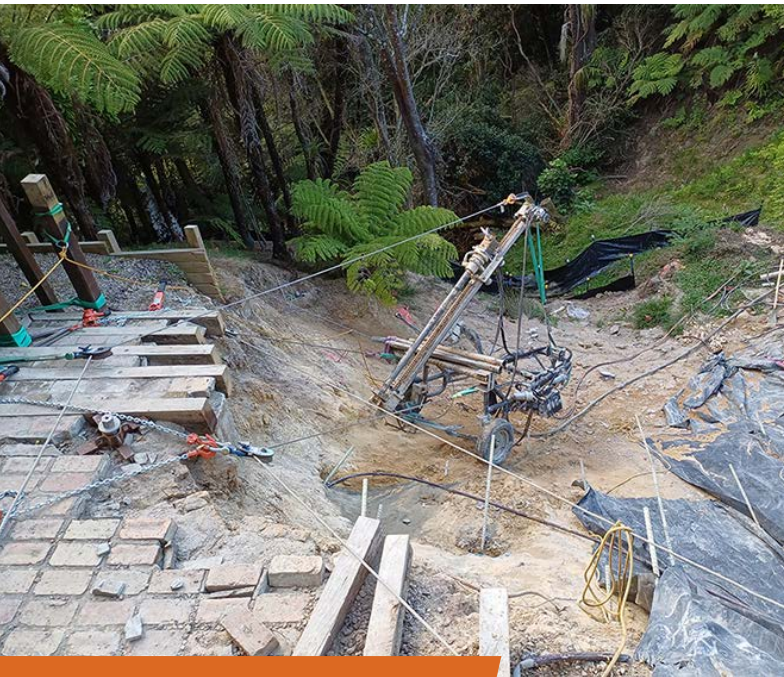
ROPE ACCESS RIG DRILL MASTS

Due to New Zealand's unstable geology, the Rope Access Rigs and Masts are a crucial piece of equipment for projects working on improving earth cohesion and stabilising ground conditions. The rigs are light, versatile and easy to transport, making them ideal for working in areas with difficult access, such as steep rock walls or landslips that can only be reached by foot or abseil ropes.

Antares Engineering, part of the CLL family, have further developed the Rope Access Rig A-Frames and Masts to meet the requirements of geo-technical projects working with severe landslips or complicated cliff repairs specific to New Zealand.

**RAR 01 - 03 RIPAMONTI SDI 180
A-FRAME & MAST**

RAR 04 & 05 CLL A-FRAME WITH RIPAMONTI MAST



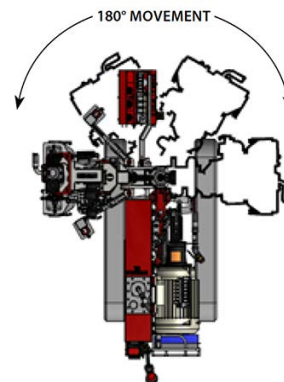
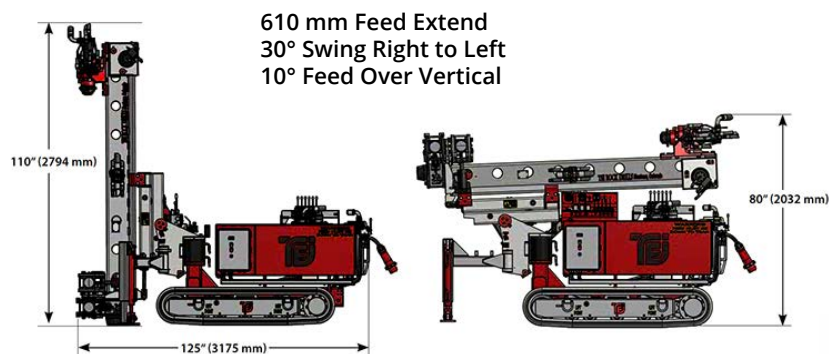
0800 255677

www.antareshire.nz



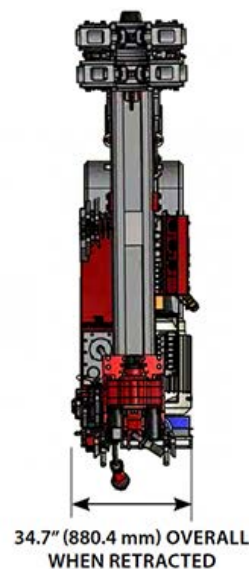
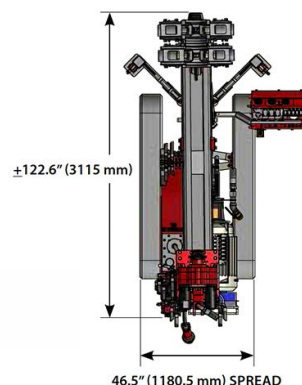
TEI TD75 ELECTRIC MICROPILING RIG

The TEI TD75 is an electric/hydraulic limited access drill designed to safely install cased and hollow bar micro piles in challenging or tight spaces. The rubber tracks can contract to 900 mm to pass through a standard doorway, and it can maneuver into tight places making it an ideal machine for seismic retrofits, foundation repair, dam rehabilitation and ground consolidation.



Included with the TEI TD75 Micropiling Rig:

- Rig Container
- Flow Meter
- ChemGrout Pump
- TE760 Hydraulic Drifter
- RDS550 Rotary Drill Head
- Belle Midi 20-140 Hydraulic Power Pack
- Excavator Ramps 6 t



Technical Data

Electric Motor	56 kW (75 hp)
Mast Pullback	16270 Nm
Rotary Torque	6780 Nm
Supply Pressure	172 bar
Hydraulic Tank	114 l
Power Input	3-Phase 480 Volt / 50 Hertz
Generator Required	125 kW
Weight	2585 kg





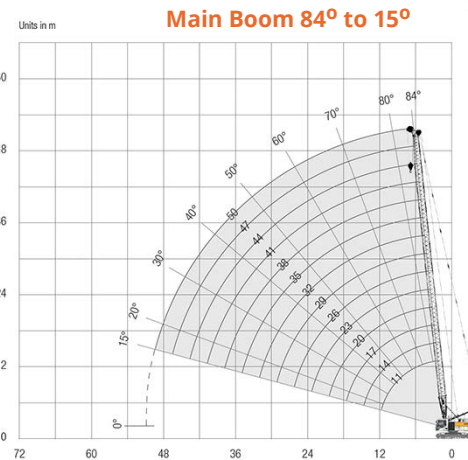
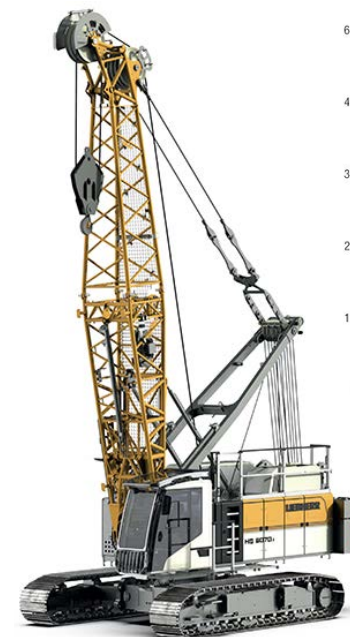
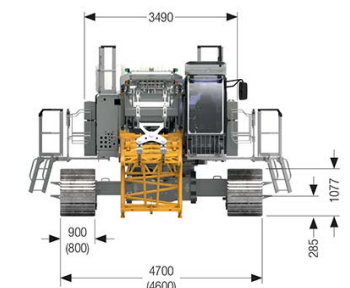
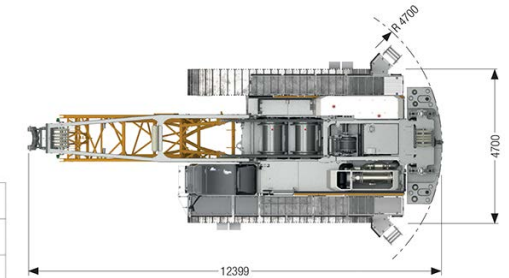
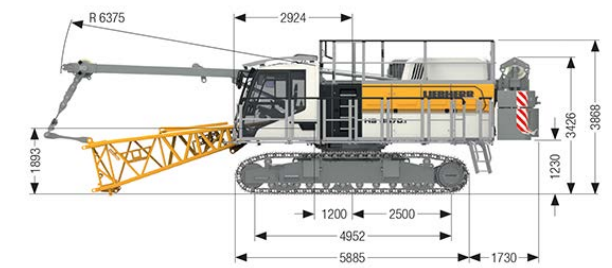
CRANE - LIEBHERR HS8070.1

The HS 8070.1 is the latest generation of Liebherr duty cycle crawler cranes with an enhanced diesel engine and significantly low noise emission and fuel consumption. With a load capacity of 70 t, it is excellent in construction projects for material handling, deep foundation work or heavy duty lifting.

Technical Data

Main Boom	in Lifting Operation	50 m
	in Duty Cycle Operation	32 m
Crawler	Diesel Engine	320 kW at 1700 rpm
	Drive Speed	0 - 1.5 kph
	3-web Grousers	800 mm
Hydraulic System	Oil Tank	8290 l
	Max. Working Pressure	350 bar
	Max. Power at Connection Plate	200 kW (2 x 290 l/min)
Boom Winch	Line Pull	105 kN
	Rope Diameter	20 mm
	Boom Luffing	15-86° in 44 secs
Swing Gear	Drive System	2 x swing drives
	Swing Speed (w 3 speed ranges)	4.5 rpm
Hoisting Gear (2 main winches)	Line Pull (1st layer)	200 kN
	Rope Diameter	30 mm
	Drum Diameter	630 mm
	Rope Speed	0 - 125 m/min
	Rope Length (1st layer)	40.6 m (effective)
	Rope Length (3rd layer)	149.4 m (effective)
Operating Weight (basic machine)		72 t
Ground Pressure (with 800 mm grousers)		0.9 kg/cm2

Dimensions



AUXILIARY JIB 20T

Boom Section	No. of Boom Sections (Preferred Combination)					
Boom Foot 5.5 m	1	1	1	1	1	1
Boom Section 3 m	1	1	1	1	1	1
Boom Section 6 m	1	2	3	4	5	6
Boom Head 5.5 m	1	1	1	1	1	1
Boom Length [m]	20	26	32	38	44	50

0800 255677

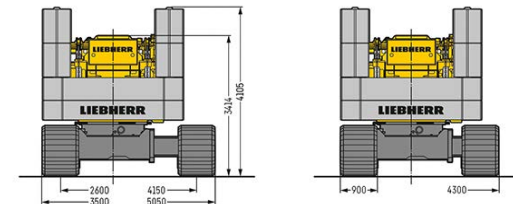
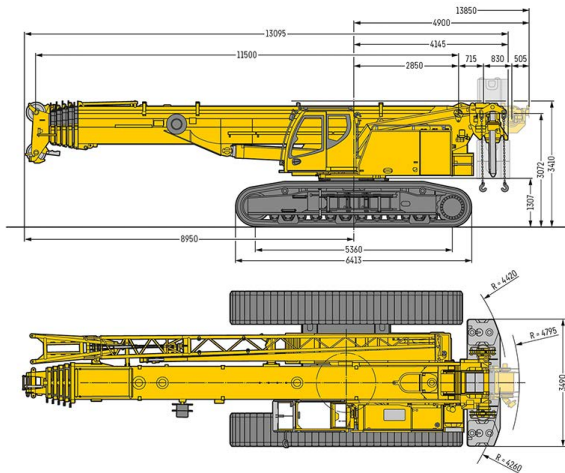
www.antareshire.nz



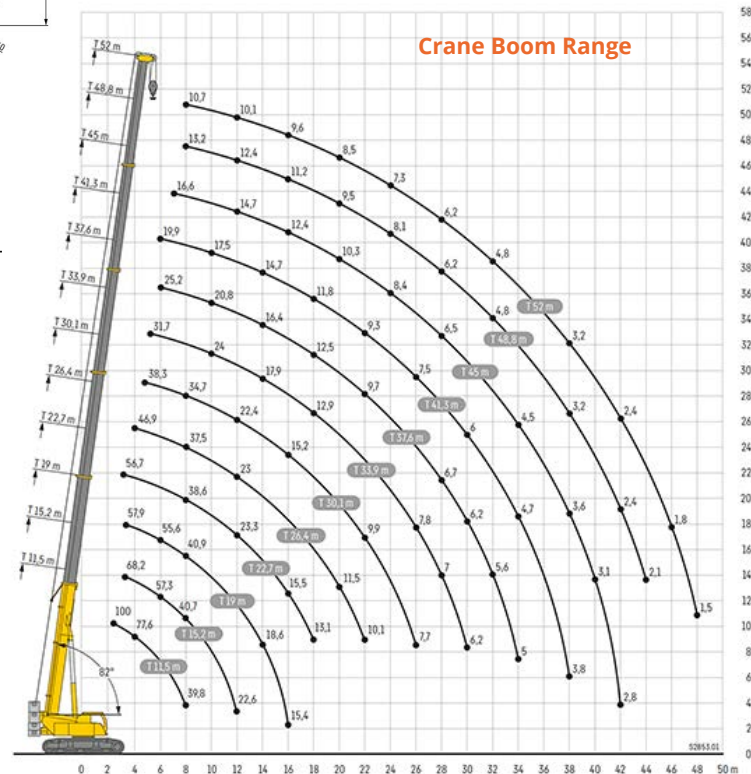
TELESCOPIC CRANE - LIEBHERR LTR1100

The LTR1100 has a maximum lift capacity of 110 t with a 52 m five-section telescopic main boom.

Technical Data & Dimensions



Crane Boom	Telescopic Boom	52 m
	Mechanical/Hydraulic Folding Jib	10.8 - 19 m
	Telescopic Boom Extension	2 x 7 m
	Assembly Jib	2.9 m
Working Range (w/o load)	Boom telescoping speed	11.5 - 52 m in 380 secs
	Boom raising speed	60 sec to 82°
	Driving force	660 kN
	Swing speed	1.5 rpm
	Travel speed	1 - 2.8 kph
	Gradeability (max.)	46%
Lines 1 & 2	Line Speed	110 m/min
	Line Diameter	21 mm
	Line Length	205 m
	Line Pull Force	88 kN
Operating Weight (w 32 t counterweight, 15 t central ballast & 3-sheave hook block)		103 t
Ground Pressure		10.8 t/m ²

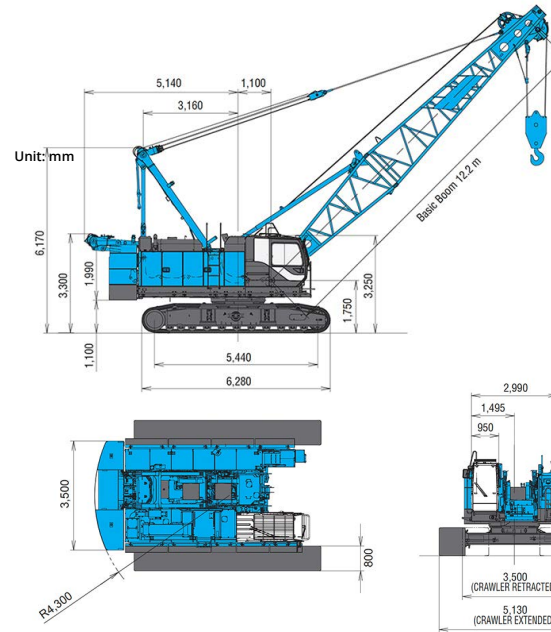




80T CRANE - KOBELCO BMS800

This powerful heavy duty 80 t crawler crane with a 75 t maximum lift is designed for foundation work. The smooth and precise controls mean hoisting and slewing during continuous high volume work can be carried out without causing fatigue and stress on the operator.

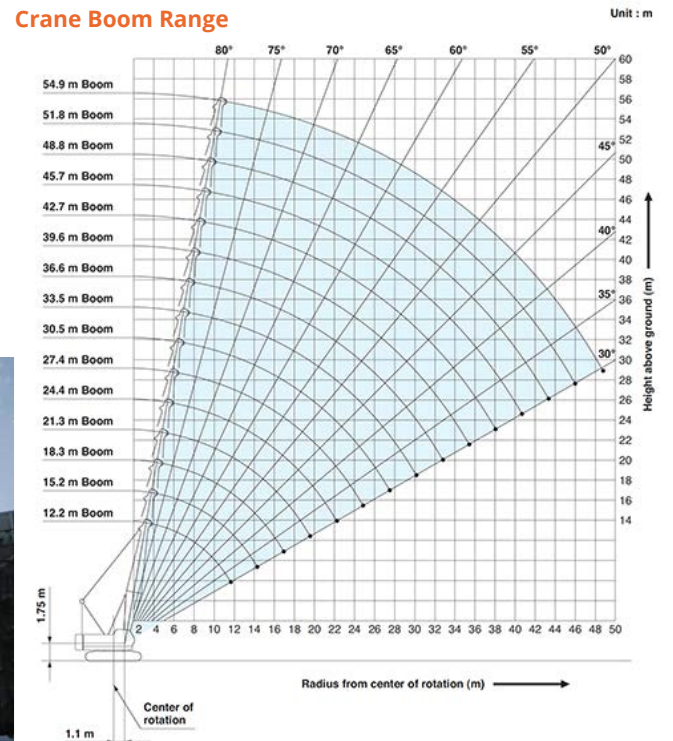
Operating Dimensions



Technical Data

Crane Boom	Max. Lifting Capacity	80 t x 3.6 m
	Boom Length	12.2 - 54.9 m
Working Range	Main Line Speed (1st layer)	120 m/min
	Rated Line Pull (single line)	108 kN
	Wire Rope Diameter	26 mm
	Wire Rope Length	175 m (main) 130 m (aux)
	Brake Type	Wet-type multiple disc brake (Standard)
	Swing speed	4 rpm
Operating Weight	Travel speed	1.2 - 1.7 kph
	Counterweight	76 t
	Transport Weight	25400 kg
		48.63 t

Crane Boom Range



0800 255677

www.antareshire.nz



TELESCOPIC CRAWLER CRANE - KOBELCO TK550

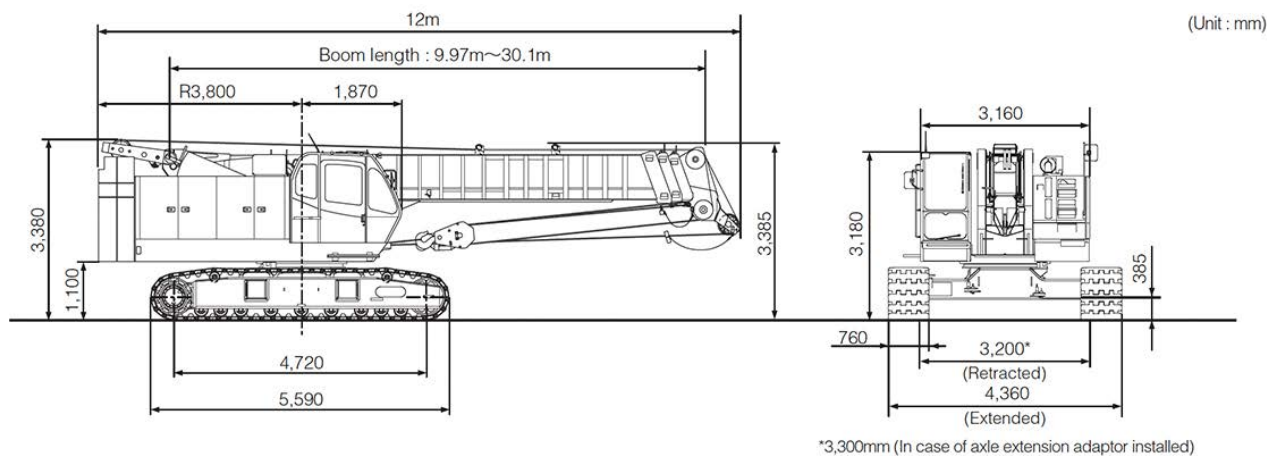
The TK550 combines the stability and lift power unique to crawler cranes with an automatic boom extender/retractor to easily adapt to site conditions and work more efficiently, whether the project requires foundation work using the vibro-hammer or auger attachments, or material handling using the extendable boom.

Technical Data



Crane Boom	9.97 m boom	55 t x 3 m (12 lines)
	16.7 m boom	28 t x 5 m (6 lines)
	23.4 m boom	22 t x 6 m (5 lines)
	30.1 m boom	14 t x 6.5 m (4 lines)
	Aux. Sheave (max.)	5 t (single line)
	Boom length	9.97 - 30.1 m
	Main Hook Max. Height	30.7 m
	Main Hook Max. Operating Radius	27.6 m
Working Range (w/o load)	Main line speed (at 4th layer)	125 m/min
	Aux. line speed (at 2nd layer)	110 m/min
	Third (at 3rd layer - optional)	100 m/min
	Boom telescoping speed	120/20.1 sec/m
	Boom raising speed	64 to 82.5 sec/degree
	Swing speed	2.3 rpm
	Travel speed	1.2 - 1.9 kph
	Gradeability	30%
Line Pull	Main	44.1 kN
	Aux.	49 kN
	Third (optional)	29.4 kN
Operating Weight	49.98 t	
Ground Pressure	0.68.3 kgf/cm2	

General Dimensions





CRANE VIBES & DAMPENERS

Antares Hire provides crane specific vibratory hammers with power packs and a range of attachments; chain sets, counterweights, boom extensions, man cages, single and double door site tool boxes and 2.2 t pallet hooks.

MÜLLER MS24 HFV CRANE HYDRAULIC VIBRO HAMMER



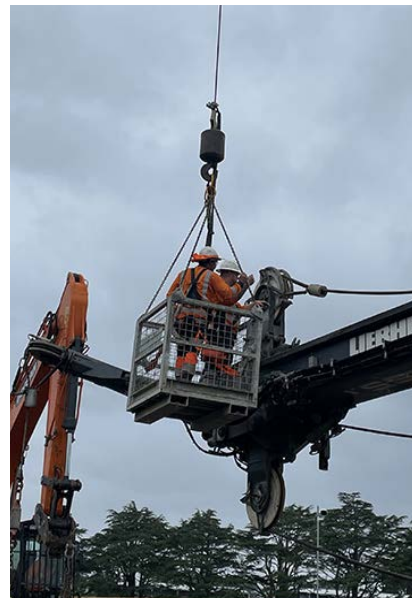
The Müller MS-24HFV is an 8 t soft start crane sheet pile driver with single head and twin head clamp jaws and 42 m hose.

MÜLLER MS24-2 POWER PACK



Müller MS24-2 Power Pack comes in soundproof container on a skid base. Weight: 8.5 t.

2 MAN CAGE



2.2 T CRANE PALLET HOOK



SD70 TÜNKERS SHOCK ABSORBER



0800 255677

www.antareshire.nz



MANCO RAIL SPECIALIST EQUIPMENT

Manco Rail is custom built quality rail and road/rail equipment for rail electrification construction and rail maintenance.

MANCO RAIL HIDROMEK 145LCSR-H4 EXCAVATOR 14.5T

The Hi-Rail Hidromek 145LCSR-H4 is a 14 t excavator with the ability to work on any terrain and the undercarriage has been modified with a Manco Rail system to allow it to work along rail tracks.

Dimensions	Overall length	7610 mm
	Overall height (boom)	2950 mm
	Overall width	2490 mm
	Boom length	4800 mm
	Arm length	2600 mm
Swing Speed		11.3 rpm
Working Range	Max. digging reach	8840 mm
	Max. digging reach (ground)	8690 mm
	Max. digging depth	5690 mm
	Max. vertical wall depth	5120 mm
	Max. digging height	10070 mm
	Max. dumping height	7350 mm
	Min. dumping height	2810 mm
Digging Performance	Tail swing radius	1500 mm
	Standard H Class Bucket SAE/PCSA	0.6 m ³
	Bucket digging force ISO	9500 kgf
Operating Weight (600 mm TG shoe width)	Arm crowd force ISO	6300 kgf
		17050 kg
Ground Pressure		0.48 kgf/cm ²
Travel Speed		3.4 - 5.7 kph



MANCO RAIL MLRB-34 LOW BED TRANSPORTER



Manco MLRB-34 with infill flat decks provides the operator with the versatility to use the unit as a multipurpose rail transporter to carry plant, tools, railway sleepers, or aggregate materials.

The MLRB-34 has a front drive unit and rear non-drive unit. The front unit load capacity is 13,000 kg and the rear load capacity is 17,000 kg with the infill flat decks installed (flat deck weight is 1500 kg). Without the flat deck installed, the load capacity of the MLRB is 15,000 kg for the front unit and 19,000 kg for the rear. The power plant and hydro-static drive system is installed on the front unit, which adds increased load.





EXCAVATORS - 36T

Antares Hire has a several Doosan 36 t excavators, which are heavy duty machines used in a variety of construction projects. The DX360LC-7M is a high performance machine with a heavy duty boom and arm made from high strength tensile steel with a digging height up to 10.2 m and a dumping height of 7.2 m. Attachments include: Rock Bucket, Weed Bucket, Drill Motors, Pile Driver, Vibe Hammer and 2 t Fambo Hammer.

DOOSAN DX360LC-7M 36T

Dimensions	Overall length	11315 mm
	Overall height (boom hose)	3420 mm
	Overall width	3280 mm
	Boom length	6500 mm
	Arm length	3200 mm
Swing Speed		9.3 rpm
Working Range	Max. digging reach	11120 mm
	Max. digging reach (ground)	10920 mm
	Max. digging depth	7485 mm
	Max. vertical wall depth	4020 mm
	Max. digging height	10215 mm
	Max. dumping height	7220 mm
	Min. dumping height	2755 mm
Digging Performance	Min. swing radius	4455 mm
	Standard H Class Bucket SAE/PCSA	1.81 m ³
	Bucket digging force ISO	24.7 / 26.1 t
Arm crowd force ISO		17.9 / 19.0 t
Operating Weight (600 mm DG shoe width)		38300 kg
Ground Pressure		0.74 kgf/cm ²
Travel Speed		3.4 - 5.5 kph



Refer to the technical specification for full details on performance, dimensions, working range, lifting capacity and digging force as machine specifications may vary.

0800 255677

www.antareshire.nz



EXCAVATORS - 32T

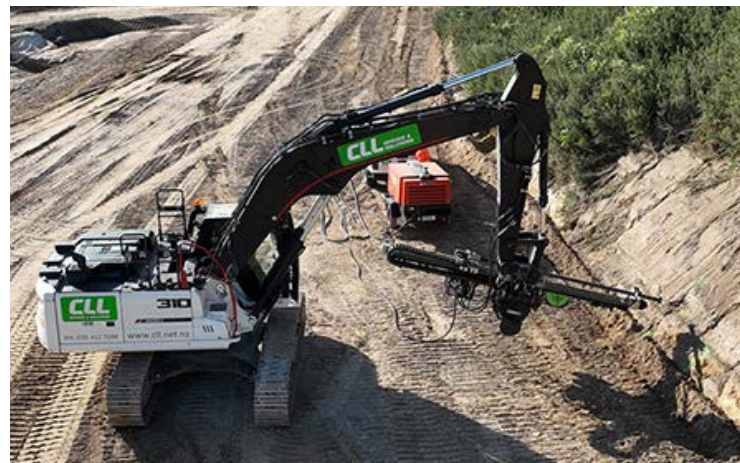
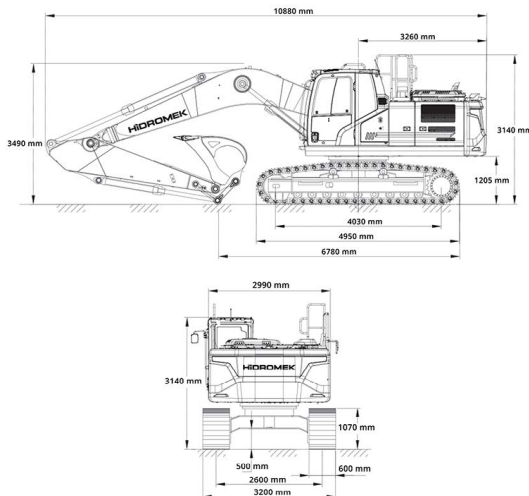
HIDROMEK HML 310LC-3 32T

Designed for heavy duty construction whilst achieving maximum performance by working faster and more efficiently. Includes iDig Touch 2D Complete System XD610 and the safety standards of ROPS (Roll Over Protective Structure) & FOPS (Falling Object Protective Structure). Attachments include Rock Bucket, Weed Bucket, Pile Driver, Drill and 2T Hammer.



Technical Data & Dimensions

Dimensions	Overall length	10880 mm
	Overall height to top of boom	3490 mm
	Overall width	3200 mm
	Boom length	6280 mm
	Arm length	2500 mm
Swing Speed		10.2 rpm
Working Range	Max. digging reach	10370 mm
	Max. digging reach (ground)	10150 mm
	Max. digging depth	6760 mm
	Max. vertical wall depth	5140 mm
	Max. digging height	9990 mm
	Max. dumping clearance	7020 mm
	Min. swing radius	4360 mm
Digging Performance	Standard Bucket Capacity	1.6 m3
	Bucket digging force ISO	19800 kgf
	Arm crowd force ISO	16500 kgf
Max. Operating Weight (600 mm shoe width)		31600 kg
Travel Speed		2.9 - 5.1 kph





EXCAVATORS - 23.5T to 25T

Antares Hire has a range of 23.5 t - 25 t excavators, including the Doosan DX235LCR5 and Hyundai 250LC-9, along with attachments; Rock Bucket, Weed Bucket, Drill, Pile Driver, Vibe Hammer, and 2 t Fambo Hammer.

DOOSAN DX235LCR5 23.5T

Dimensions	Overall length	9025 mm
	Overall height over cab	3080 mm
	Track length	4445 mm
	Undercarriage width	2990 mm
	Boom length	5700 mm
	Arm length	2400 mm
Swing Speed		11.3 rpm
Working Range	Max. digging reach	9405 mm
	Max. digging reach (ground)	9205 mm
	Max. digging depth	6170 mm
	Max. vertical wall depth	5040 mm
	Max. digging height	10550 mm
	Max. loading height	7690 mm
Operating Weight w/o components (600 mm std shoe)		24.3 t
Travel Speed		3.2 - 5.8 kph

HYUNDAI 250LC-9 25T

Dimensions	Overall length	10050 mm
	Overall height of cab	2990 mm
	Overall width	3180 mm
	Boom length	5850 mm
	Arm length	2100 mm
Swing Speed		12 rpm
Working Range	Max. digging reach	9550 mm
	Max. digging reach (ground)	9360 mm
	Max. digging depth	6050 mm
	Max. vertical wall depth	5480 mm
	Max. digging height	9450 mm
	Max. dumping height	6360 mm
Min. swing radius		4420 mm
Max. Operating Weight (600 mm shoes)		25200 kg
Travel Speed		3.3 - 5.3 kph

Refer to the technical specification for full details on performance, dimensions, working range, lifting capacity and digging force as machine specifications may vary.

2T FAMBO HAMMER (DX235LCR5 attachment)



Refer to the technical specification for full details on performance, dimensions, working range, lifting capacity and digging force as machine specifications may vary.



EXCAVATORS - 21T to 22.5T

Antares Hire has a range of 21 t - 22.5 t excavators, including the Hyundai R210 LC-9 and Doosan DX225LC-7, along with attachments; Rock Bucket, Weed Bucket, Drill, Pile Driver, Vibe Hammer.

HYUNDAI R210 LC-9 21T

Dimensions	Overall length	9650 mm
	Overall height of cab	2920 mm
	Overall width	2990 mm
	Boom length	5680 mm
	Arm length	2000 mm
Swing Speed		12 rpm
Working Range	Max. digging reach	9140 mm
	Max. digging reach (ground)	8960 mm
	Max. digging depth	5820 mm
	Max. vertical wall depth	5280 mm
	Max. digging height	9140 mm
	Max. dumping height	6330 mm
Min. swing radius		3750 mm
Max. Operating Weight (600 mm shoes)		21900 kg
Travel Speed		3.4 - 5.3 kph

Refer to the technical specification for full details on performance, dimensions, working range and lifting capacity as machine specifications may vary.



DOOSAN DX225LC-7 22.5T

Exceptionally powerful, yet environmentally friendly with low emissions and excellent fuel efficiency.

Dimensions	Overall length	9600 mm
	Overall height over cab	2980 mm
	Track length	4445 mm
	Undercarriage width	2990 mm
	Boom length	5700 mm
	Arm length	2900 mm
Swing Speed		10.9 rpm
Working Range	Max. digging reach	9865 mm
	Max. digging reach (ground)	9695 mm
	Max. digging depth	6590 mm
	Max. vertical wall depth	5525 mm
	Max. digging height	9620 mm
	Max. loading height	6830 mm
Min. swing radius		3560 mm
Operating Weight w/o components (600 mm std shoe)		23.3 t
Travel Speed		3.1 - 5.5 kph

Refer to the technical specification for full details on performance, dimensions, working range and lifting capacity as machine specifications may vary.



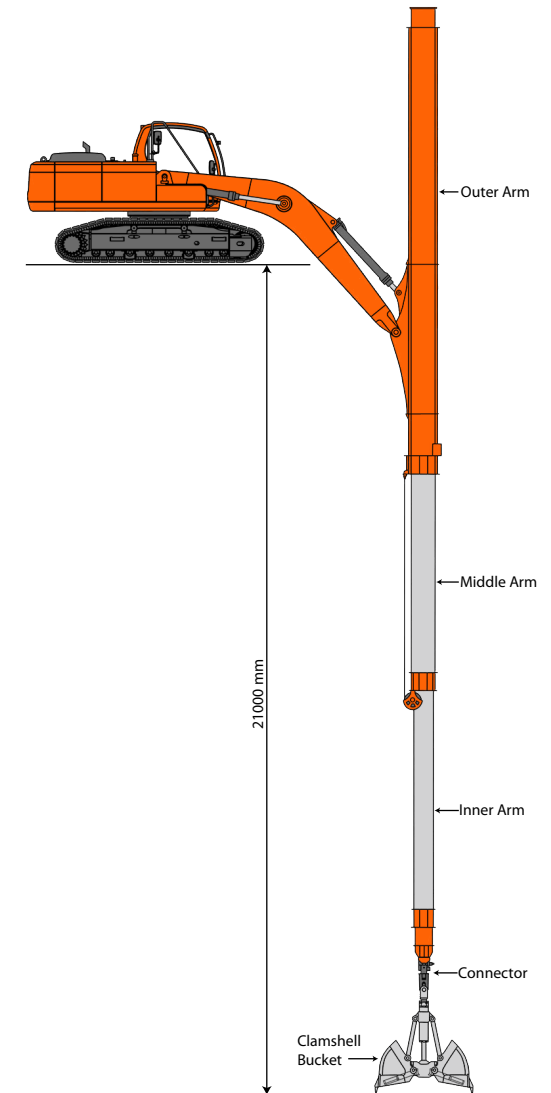


EXCAVATORS - 22.5T TELESCOPIC DEEP REACH

Doosan's Long Reach technology is designed for the construction and maintenance of drainage channels as well as to easily reach over long distances during excavation. The clamshell bucket is suitable for dredging, excavation, bulk material handling, and loading/unloading duties in construction. Its versatile design makes it suitable for various materials, including soil, sand, gravel, rocks, and debris.

DOOSAN DX225LCA 22.5T TELESCOPIC DEEP REACH

Dimensions	DB58TI5 Turbo Diesel Engine	155 hp
	Overall length	9570 mm
	Overall height over cab	2980 mm
	Track length	4445 mm
	Undercarriage width	2990 mm
	Boom length	5700 mm
Swing Speed		11.4 rpm
Teleboom	Max. digging depth	21000 m
	Max. dumping height	5600 m
	Max. working radius	10000 mm
	Max. vertical digging radius	8300 mm
	Additional counterweight	1.3 t
Clamshell Bucket	Clamshell bucket capacity	0.6 m3
	Weight	1160 kg
	Hydraulic pressure	300 kgf/cm2
	Bucket speed (open/close)	1.5-2 sec
	Height fully open	2140 mm
	Overall height	2380 mm
	Width closed	1610 mm
	Width opened	1870 mm
	Bucket width	900 mm
Operating Weight w/o Teleboom (600 mm std shoe)		21.7 t
Travel Speed		3.1 - 6.5 kph



0800 255677

www.antareshire.nz



EXCAVATORS - 14T

Antares Hire has a range of 14 t excavators, including the Hyundai R145 CR-9 and Doosan DX140-LCR, along with attachments; Rock Bucket, Weed Bucket, Drill, Pile Driver, Vibe Hammer.

HYUNDAI R145 CR-9 14.5T

Short (1,480mm) tail swing radius allows for work in confined urban areas, close to buildings.

Dimensions	Overall length	7290 mm
	Overall height of cab	2900 mm
	Overall width	2500 mm
	Boom length	4600 mm
	Arm length	1900 mm
Swing Speed		12 rpm
Working Range	Max. digging reach	7730 mm
	Max. digging reach (ground)	7580 mm
	Max. digging depth	4890 mm
	Max. vertical wall depth	4400 mm
	Max. digging height	8840 mm
	Max. dumping height	6350 mm
Min. swing radius		1860
Max. Operating Weight (500 mm shoes)		14600 kg
Travel Speed		3.2 - 5.5 kph

Refer to the technical specification for full details on performance, dimensions, working range and lifting capacity as machine specifications may vary.



DOOSAN DX140-LCR 14T

Zero swing excavator with powerful lifting capacity and works efficiently in narrow spaces.

Dimensions	Overall length	7230 mm
	Overall height over cab	2795 mm
	Track length	3755 mm
	Undercarriage width	2590 mm
	Standard Boom	4600 mm
Standard Arm		2500 mm
Swing Speed		10.7 rpm
Working Range	Max. digging reach	8300 mm
	Max. digging reach (ground)	8155 mm
	Max. digging depth	5500 mm
	Max. vertical wall depth	4555 mm
	Max. digging height	9280 mm
	Max. loading height	6840 mm
Min. swing radius		1995 mm
Max. Operating Weight (600 mm shoe width)		14480 kg
Ground Pressure		0.36 kgf/cm2
Travel Speed		3 - 5 kph





EXCAVATORS - 8T

KUBOTA KX080-3S 8T

The Kubota KX080-3S is a large Utility Class excavator designed for urban environments, whilst at the same time providing advanced industrial level performance.



Dimensions and Working Range

Dimensions	Overall length	6450 mm
	Overall height	2540 mm
	Overall width	2200 mm
Swing System	Speed	9.5 rpm
	Boom swing angle (left / right)	70° / 60°
Working Range	Max. cutting height	7300 mm
	Max. dumping height	5250 mm
	Max. digging depth	4600 mm
	Max. vertical digging depth	3850 mm
	Max. digging radius	7330 mm
	Min. turning radius (w/o swing)	2490
	Min. turning radius (w swing)	2000 mm
	Min. tail turning radius	1460 mm
Max. Operating Weight (rubber tracks)		8330 kg
Travel Speed		2.7 - 4.9 kph

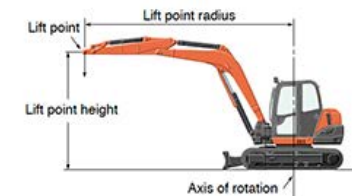


Lifting Capacity

LIFT POINT HEIGHT (m)	LIFTING CAPACITY OVER-FRONT BLADE DOWN unit=ton			LIFTING CAPACITY OVER-SIDE unit=ton		
	LIFT POINT RADIUS (m)			LIFT POINT RADIUS (m)		
	3	5	MAX	3	5	MAX
3	2.20	1.65	1.55	2.20	1.10	0.80
2	3.35	1.85	1.60	2.25	1.05	0.70
1	4.15	2.05	1.60	2.05	1.00	0.70
GL	0	4.35	2.15	1.95	0.95	0.70

Machine with cabin and rubber crawler, without bucket

Refer to the technical specification for full details on performance, dimensions, working range and lifting capacity as machine specifications may vary.



0800 255677

www.antareshire.nz



EXCAVATORS - 5T

Antares Hire has a range of 5 t excavators, including the Kubota U55-4 and Airman AX55U-6A.

KUBOTA U55-4 5.5T

Tight tail swing excavator with the power and flexibility to work efficiently in narrow spaces.

Dimensions and Working Range

Dimensions	Overall length	5500 mm
	Overall height	2550 mm
	Overall width	1960 mm
Swing System	Speed	9.3 rpm
	Boom swing angle (left / right)	70° / 55°
Working Range	Max. digging height	5665 mm
	Max. dumping height	4005 mm
	Max. digging depth	3630 mm
	Max. vertical digging depth	2830 mm
	Max. digging radius	6105 mm
	Min. turning radius (w/o swing)	2460 mm
	Min. turning radius (w swing)	2020 mm
	Min. turning radius	1045 mm
Max. Operating Weight (rubber tracks)		5470 kg
Travel Speed (rubber tracks)		2.8 - 4.9 kph



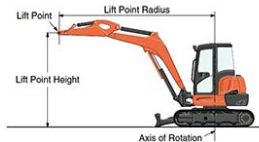
Refer to the technical specification for full details on performance, dimensions, working range and lifting capacity as machine specifications may vary.

Lifting Capacity

Canopy rubber

LIFT POINT HEIGHT (m)	LIFTING CAPACITY OVER-FRONT BLADE DOWN unit = ton			LIFTING CAPACITY OVER-SIDE unit = ton			
	LIFT POINT RADIUS (m)			LIFT POINT RADIUS (m)			
	4	5	MAX	4	5	MAX	
GL	3	1.18	-	-	0.79	-	-
	2	1.36	1.16	1.08	0.76	0.53	0.50
	1	1.56	1.22	1.16	0.71	0.52	0.48
	0	1.65	1.21	1.18	0.68	0.50	0.49

Machine with canopy and rubber crawler, without bucket



AIRMAN AX55U-6A 5T



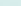
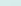
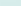

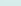
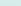

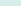


The design of the Airman AX55U-6A series mini excavators gives top priority to safety.



Dimensions and Working Range

Dimensions	Overall length	5520 mm
	Overall height	2530 mm
	Overall width	2000 mm
Swing System	Speed	9 rpm
	Boom swing angle (left / right)	80° / 60°
Working Range	Max. cutting height	6000 mm
	Max. dumping height	4310 mm
	Max. digging depth	3830 mm
	Max. vertical digging depth	3140 mm
	Max. digging reach	6260 mm
	Max. boom swing radius	1810 mm
	Min. swing radius	2300 mm
Max. Operating Weight (rubber tracks)		5210 kg
Travel Speed		2.5 - 4.2 kph

Lifting Capacity

AX55u-6A Canopy Version, Blade above Ground												
<div><div> Rating over-front</div><div> Rating over-side or 360 degrees</div><div>Unit: 1,000 kg</div></div>												
Conditions	Load point height m	Load radius								At max. reach		
		2.0 m		3.0 m		4.0 m		5.0 m				
												meter
Arm 1.38 m Rubber shoe 400 mm	3.0m			*1.26	*1.26	0.84	1.00			0.65	0.77	4.69
	2.0m			1.24	1.51	0.81	0.97	0.58	0.69	0.57	0.68	5.03
	1.0m			1.15	1.42	0.77	0.93	0.56	0.67	0.55	0.65	5.11
	0 (Ground)			1.12	1.39	0.75	0.91			0.57	0.68	4.94
	-1.0m	2.20	*2.68	1.13	1.39	0.75	0.91			0.65	0.78	4.49
	-2.0m	2.25	*2.69	1.16	1.42					0.89	1.08	3.61

Refer to the technical specification for full details on performance, dimensions, working range and lifting capacity as machine specifications may vary.





EXCAVATORS - 3T

Antares Hire has a range of 3 t excavators, including the Kubota U27-4 and Airman Mini AX30-U.

KUBOTA U27-4 2.7T

Zero tail swing excavator designed to handle challenging jobs out of reach for bigger excavators. Attachments includes Rock, Spade and Weed Buckets, PD3 Drill Motor and Drill Beak.



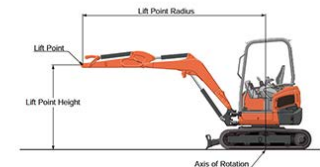
Dimensions and Working Range

Dimensions	Overall length	4100 mm
	Overall height	2420 mm
	Overall width	1500 mm
Swing System	Speed	9.9 rpm
	Boom swing angle (left / right)	75° / 55°
Working Range	Max. digging height	4370 mm
	Max. dumping height	3100 mm
	Max. digging depth	2820 mm
	Max. digging radius	4740 mm
Operating Weight		2570 kg
Travel Speed		2.6 - 4.3 kph

Lifting Capacity

LIFT POINT HEIGHT (m)	LIFTING CAPACITY OVER-FRONT BLADE DOWN unit = kg			LIFTING CAPACITY OVER-SIDE unit = kg		
	LIFT POINT RADIUS (m)			LIFT POINT RADIUS (m)		
	2.5	3.5	MAX	2.5	3.5	MAX
2.5	-	400	-	-	300	-
1.5	560	440	420	480	290	230
0.5	800	510	440	440	280	230
GL	0	850	530	-	440	270

Machine with canopy and rubber crawler, without bucket



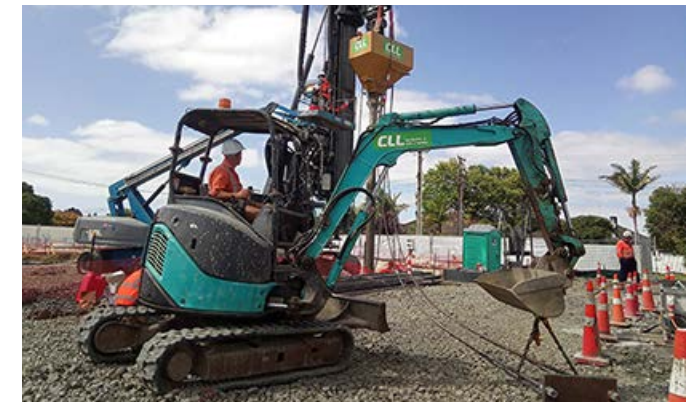
AIRMAN MINI AX30-U 3T

A mini excavator designed for ease of use and high performance for digging, loading and leveling.

Dimensions and Working Range

Dimensions	Overall transport length	4450 mm
	Overall height (canopy)	2460 mm
	Overall width	1550 mm
Swing System	Speed	9.3 rpm
	Boom swing angle (left / right)	72° / 62°
Working Range	Max. cutting height	4680 mm
	Max. dumping height	3260 mm
	Max. digging depth	2830 mm
	Max. digging reach (ground)	4770 mm
Operating Weight (canopy)		3070 kg
Travel Speed (rubber shoes)		2.8 - 4.5 kph

Refer to the technical specification for full details on performance, dimensions, working range and lifting capacity as machine specifications may vary.



0800 255677

www.antareshire.nz



EXCAVATORS - 1.7T

KUBOTA U17-3 1.7T

The Kubota U17-3 is a zero tail swing compact excavator that delivers maneuverability, power and performance in challenging spaces.

Dimensions and Working Range

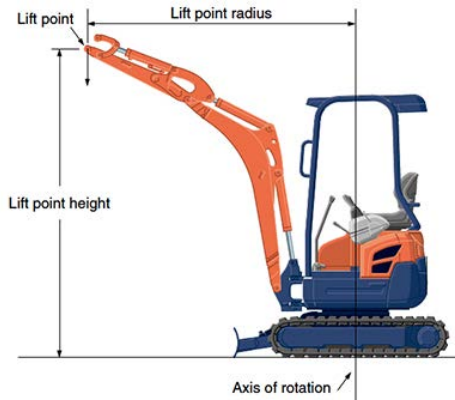
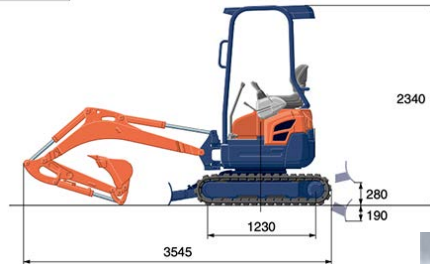
Dimensions	Overall length	3545 mm
	Overall height	2340 mm
	Overall width	990 - 1240 mm
Swing System	Speed	9.1 rpm
	Boom swing angle (left / right)	65° / 58°
Working Range	Max. digging height	3540 mm
	Max. dumping height	2440 mm
	Max. digging depth	2310 mm
	Max. digging radius	3900 mm
Operating Weight	1675 kg	
Travel Speed	2.1 - 4.1 kph	



Lifting Capacity

LIFT POINT HEIGHT (mm)	LIFTING CAPACITY OVER-FRONT BLADE DOWN unit=1000 KGS			LIFTING CAPACITY OVER-SIDE unit=1000 KGS		
	2	2.5	3	2	2.5	3
2	0.28	0.32	-	0.28	0.24	-
1.5	0.40	0.36	0.32	0.33	0.24	0.18
1	0.55	0.41	0.33	0.31	0.23	0.17
GL	0	0.58	0.43	0.32	0.29	0.21

Machine with ROPS canopy and rubber crawler, without bucket



Attachments



Refer to the technical specification for full details on performance, dimensions, working range and lifting capacity as machine specifications may vary.





DIRECTIONAL DRILLS

Directional Drilling also known as Horizontal Directional Drilling (HDD) is an advanced drilling technique used in construction to install underground infrastructure, such as pipelines, cables or piling and underpinning materials. The technique is extremely accurate and has significant environmental advantages compared to traditional cut and cover excavating as it creates minimal soil disturbance.

YONDA MAST DRILL



CLUB AIR DRILL / AUGER

Air powered drill on a 2 m chain drive, mast mounted on a 2 axle, 4 rubber wheeled trolley.



BURO MASTHEAD DRILL BDW8360

3m Excavator Attachment.
Masthead drill on a skid base.



DIRECTIONAL DRILLS

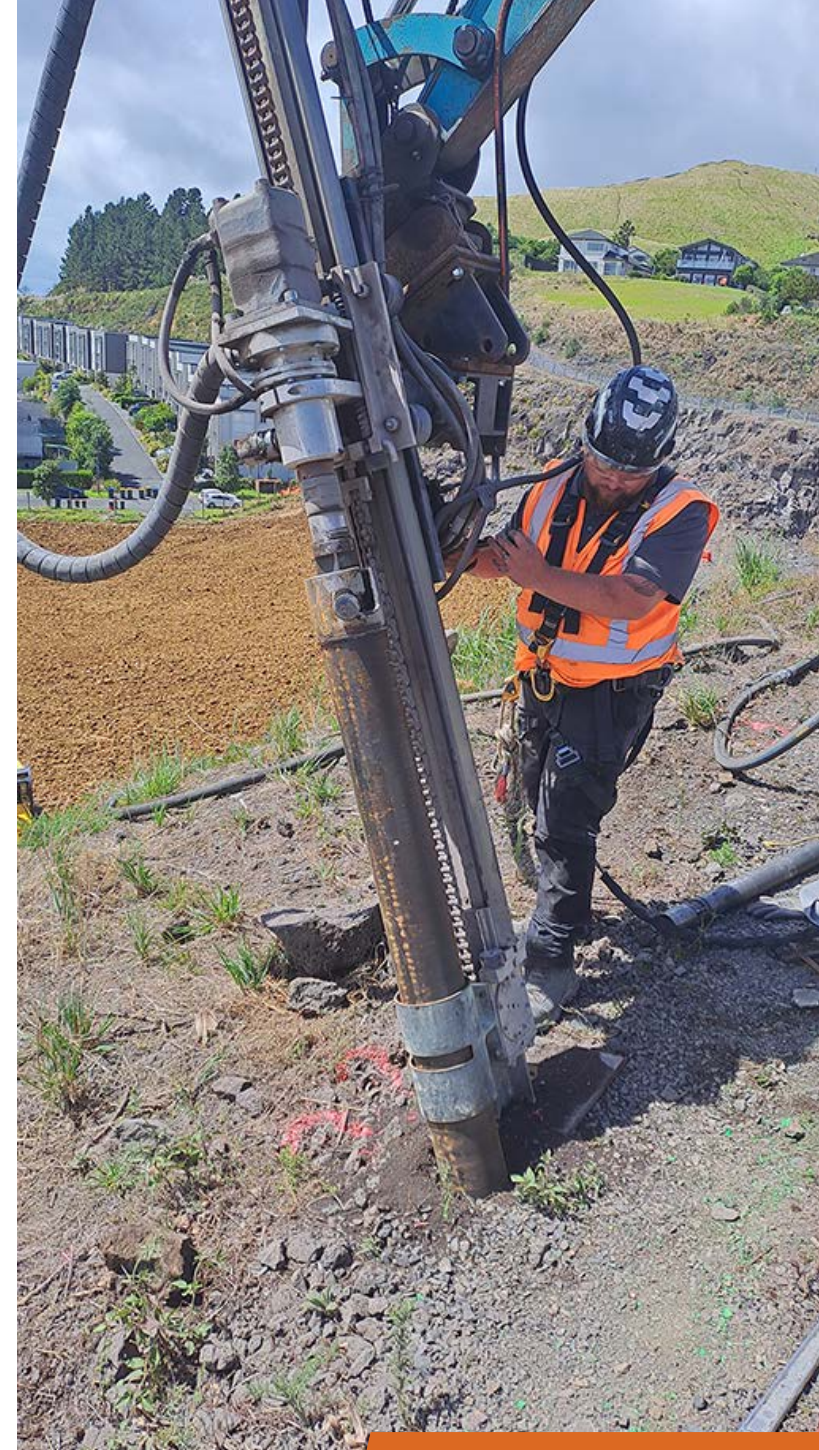
EASY DRILL FD 10-G HORIZONTAL MIDI

Excavator-mounted horizontal directional drill. Hydraulic powered with operator's control panel and skid mounted 200 l flush tank with pump.



BURO DIRECTIONAL PIT DRILL

Hydraulic pit drill with Wellington Engine, mounted on a 3 m mast attached to an excavator beak with swivel head.





EXCAVATORS - DRILL MOTORS

Antares Hire has a full range of Drill Motors compatible with excavators from 1.7 t to 36 t.

PDX2-3 FOR KUBOTA U17-3



Drill Motor	Drive	Torque	Output Shaft	Weight	Excavator Size
PDX2-3	PDX2	2.3 t	50 mm Hex	45 kg	Kubota U17-3 (1.7 t)
PD3	PD3	3.5 t	65 mm	57 kg	Kubota U27-4 (2.7 t)
PD3	PD3	3 t	75 mm Hex	50 kg	1.7 - 3 t
PD5	PD5	5 t	75 mm Hex	62 kg	1.7 - 5 t
PD6	PD5	5 t	75 mm Square	85 kg	1.7 - 8 t
PD8	PD8	8 t	75 mm Square	150 kg	1.7 - 8 t
PD18	PD18	18 t	75 mm Square	180 kg	1.7 - 8 t
PD22	PD22	22 t	100 mm Square	180 kg	1.7 - 14 t
PD25	PD25	25 t	75 mm Square	300 kg	1.7 - 8 t
PD25	PD25	25 t	100 mm Square	300 kg	14 t & above
PD30	PD30	30 t	100 mm Square	300 kg	14 t & above
PD40	PD40	32 t	100 mm Square	300 kg	14 t & above
Digga SD70 2 Speed	SD70	68 t	130 mm Square	836 kg	28 t & above
Huggins Streamline CFA	PD55	55 t	100 mm	-	32 t & above
PD60 Streamline CFA	PD55	55 t	100 mm Square	-	32 t & above

PD3 75 MM HEX



PD25 100 MM SQUARE



SD70 2-SPEED



PD5 75 MM HEX



PD18 75 MM SQUARE



PD60 STREAMLINE CFA



0800 255677

www.antareshire.nz



EXCAVATOR MOUNTED VIBES

INTESO ITS-6 VIBRO HAMMER



Suitable for 20 t excavators.
This vibro hammer comes with an excavator beak attachment and hydraulic fittings.
Clamp force 80 t. Weight: 2630 kg

SHEET PILE VIBRO-HAMMER



Suitable for 20 t excavators.
This vibro hammer comes with an excavator beak attachment and hydraulic fittings.
Weight: 2600 kg

CAGE VIBE UNIT



Custom built by Antares Engineering, the cage vibe is suitable for an excavator or a crane suspended from the Strop.

EXCAVATOR MOUNTED PILE DRIVER



Suitable for 25 t - 30 t excavators. This pile driver comes with a 2400 mm excavator beak fitted with swing head hammer mount and 5.3 kg vibratory hammer.





EXCAVATOR MOUNTED VIBES

Vibratory hammers 'vibes' are used in construction projects to drive piles into the ground or extract them using high-frequency vibration to displace the soil and reduce resistance around the pile. Modern vibes are small, lightweight and much faster and quieter than traditional pile drivers making them ideal for working in close proximity to residential areas, historical buildings or wildlife conservation areas.

Vibe	Excavator (t)	Torque	Centrifugal Force	Frequency	Pulling Force	Push Down	Oil Flow	Dimensions	Total Weight*	Dynamic Weight*
ICE328B	10 - 25 T	3.2 kgm	275 kN	2800 rpm	120 kN	100 kN	112l/min	1128 x 320 x 1390 mm	1255 kg	740 kg
ICE528B	25 - 30 T	5.6 kgm	481 kN	2800 rpm	120 kN	100 kN	167 l/min	1128 x 320 x 1502 mm	1290 kg	910 kg
ICE823B	30 T & above	8 kgm	464 kN	2300 rpm	120 kN	100 kN	185 l/min	1128 x 320 x 1481 mm	1560 kg	940 kg
Müller MS3 HFB	10 - 25 T	3 kgm	296 kN	3000 rpm	60 kN	40 kN	120 l/min	1153 x 633 x 1024 mm	830 kg	585 kg
Müller MS7 HFB	18 - 50 T	7 kgm	604 kN	2800 rpm	150 kN	80 kN	224 l/min	1239 x 742 x 1249 mm	1300 kg	950 kg

Max Operating Pressure for all Excavator Vibes is 350 bar

* including clamping

The ICE 328B, ICE 528B, and ICE 823B all include a 360° Rotator, which improves the overall operation and versatility on site.

The MÜLLER MS7 HFB includes Double Jaws.

ICE 328B



ICE 528B



ICE 823B



MÜLLER MS7 HFB



MÜLLER MS3 HFB



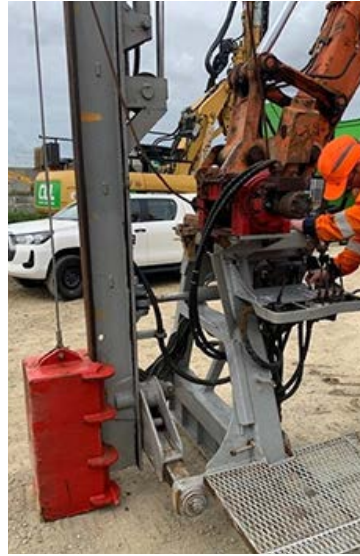
EXCAVATOR - DROP HAMMERS & PILE DRIVERS

HYDRAULIC RAM & PLATE with 1T PILE DRIVER



Suitable for 14 t excavators or 20 t excavators (with adaptor) and concrete, steel or timber piles. 6.5 m tower with internal pile driver with pile cap and rams on pile cap to avoid damage to piles. Includes excavator cab control.

500KG - 1T PILE DRIVER



8T & 11T DROP HAMMERS



POST RAM with 275KG & 500KG PILE DRIVER



Post ram excavator attachment with auxiliary piping, stabiliser legs and wire pull. 4 m mast with additional 275 kg or 500 kg pile drivers.



275 kg



500 kg

GP3 HAMMER / PILE DRIVER



Hammer is 5.4 m in length





EXCAVATOR - DROP HAMMERS & PILE DRIVERS



2.5T HAMMER / POST DRIVER

Suitable for 32 t & above excavators and concrete, steel or timber piles.

6.1 m mast with internal pile driver with pile cap and rams on pile cap to avoid damage to piles.

Includes excavator cab control.

Weight: 4.8 t

2T FAMBO HAMMER (DX235LCR5 attachment)

Suitable for 30 t & above excavators.

Dimensions: 4500(L) x 570(W) x 850(H) mm

Total Weight with Standard Pile Cap: 2,800 kg

Blows per Minute: 0 - 100

Drop Height: 0 - 1.2 m

Pile Sizes:

Timber Piles:	40 cm Ø	125 kg/m
Concrete Piles:	28 cm Ø	225 kg/m
Steel Tubes:	40 cm Ø	200 kg/m
Steel Beams:	300HEA	200 kg/m
Sheet Piles:	200 kg/m	



PILE-X-550CG PILE DRIVER with GRAPPLE

The Pile-X-550CG combines the 550C Pile driver with a powerful hydraulic hinging grapple to enable one operator to grab, rotate, drive and set.

Suitable for 10 to 25 t excavators and wood or steel piles up to 250 mm SED.

5 m mast, 500 kg block hammer, and hydraulic hinging grapple.

Pile driver weight: 1500 kg



0800 255677

www.antareshire.nz



EXCAVATOR - ROCK BREAKERS

YONDA for 1.8T EXCAVATORS



Antares Hire has a full range of Rock Breakers compatible with excavators from 1.8 t to 36 t.

YONDA for 14T EXCAVATORS



FURAKAWA F19



14 t excavator or a
20 t with adaptor

YONDA for 3T - 7T EXCAVATORS



YONDA for 20T EXCAVATORS





EXCAVATOR - ATTACHMENTS

Antares Hire has a range of excavation attachments for all size excavators to suit various construction projects and ground conditions.

HEAVY DUTY ROCK BUCKET



Heavy-duty excavator buckets designed to excavate rocks and other hard materials during construction projects.

WIDE (WEED) BUCKET



Wide buckets are short, shallow and wide, and designed for smoothing and leveling surfaces.

SPADE BUCKET



Spade buckets are used for trenching in clay where conventional buckets will become clogged. They are ideal for precision digging to create clean cut walls.

GRAPPLE



A grapple is designed for lifting and moving piles as well as sorting and loading demolished structures in construction sites.

Excavator	Rock	Wide	Spade	Grapple
1.7 t	●	●		
1.8 t	●	●	●	
3 t	●	●	●	
5 t	●	●	●	
8 t	●	●	●	
14 t	●	●	●	●
21 t	●	●		
22 t	●	●		
23 t	●	●		
32 t	●	●		
36 t	●	●		

DOWN-THE-HOLE DRILLING

Down-the-hole drilling is used for very hard rock and/or penetrating large boulders. A DTH hammer is mounted on a drill rod at the lower end and is pneumatically driven with compressed air propelling it forward to impact and break the rock, whilst simultaneously rotating and impacting. The compressed air provides a flushing current to collect loosened drill cuttings and convey them upwards out of the hole.

BULROC HYPER 241 DTH HAMMER



Hammer Weight 2500 kg
Diameter 520 mm
Hole diameter 800 mm
Length 2300 mm
N240 Shank



Thumper 240

THUMPER N240 DTH HAMMER



Weight 7500 kg
Head diameter 1000 mm
Casing diameter 900 mm
with Hardened Piston
N240 Shank

BULROC HYPER 181 DTH HAMMER



Weight (less bit) 1608 kg
Button Bit 600 mm
Hole Diameter 458-610 mm
Length (less bit) 2185 mm
with Hardened Piston
SD18 Shank



Thumper 120

THUMPER 120 DTH HAMMER



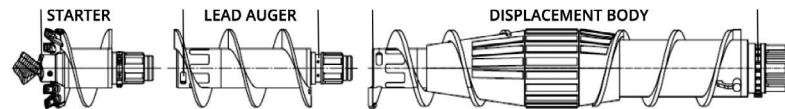
Hammer Weight 680 kg
Hole Diameter 302 - 460 mm
Length 1870 mm
with Hardened Piston
SD12 Shank





Full displacement drilling is a modified version of continuous flight auger drilling and is exclusively used for producing cast-in-place piles. The surrounding soil is partially or fully displaced with almost no drill spoil conveyed to the surface.

The FDP tool consists of a smooth casing with a displacement body fitted at the lower end, which is rotated and drilled into the ground at a controlled rate to a specified depth to displace the soil. As the drill string is extracted from the ground, concrete is pumped into the bore.





The Olivier pile is drilled into the ground with a drilling rig rotary drive. The Olivier tool consists of a lost tip attached to a partial-flight auger, which is attached to a casing. The casing is drilled into the ground to the desired depth, the lost tip is released, and the reinforcement cage is inserted into the casing. Concrete is then poured through the casing as the casing and the partial flight auger are extracted.



Olivier displacement piles require 40% less concrete than conventional bored piling or displacement piling for the same diameter. The shaft of the Olivier pile has the shape of a screw.



PILING TOOLS - CFA & DOUBLE ROTARY CFA

A Continuous Flight Auger (CFA) is a hollow stemmed auger that is drilled into the ground to a required depth. As the auger drills into the ground spoil travels up to ground level and is removed by an auger cleaner. The auger, when filled with spoil generated during the drilling process, provides support for the bore hole therefore eliminating the need for casings or support fluid.

Once the auger has reached the required depth concrete is pumped under pressure through the hollow auger stem whilst the auger is extracted until the bore is filled with concrete to ground level. A steel reinforcement cage is then placed into the fluid concrete to the required level to support the pile.

CONTINUOUS FLIGHT AUGER (CFA)



Antares Hire provide CFA tools ranging from 450 mm to 1200 mm diameter and 2 m to 6 m in length.

CFA HEAD AUGER

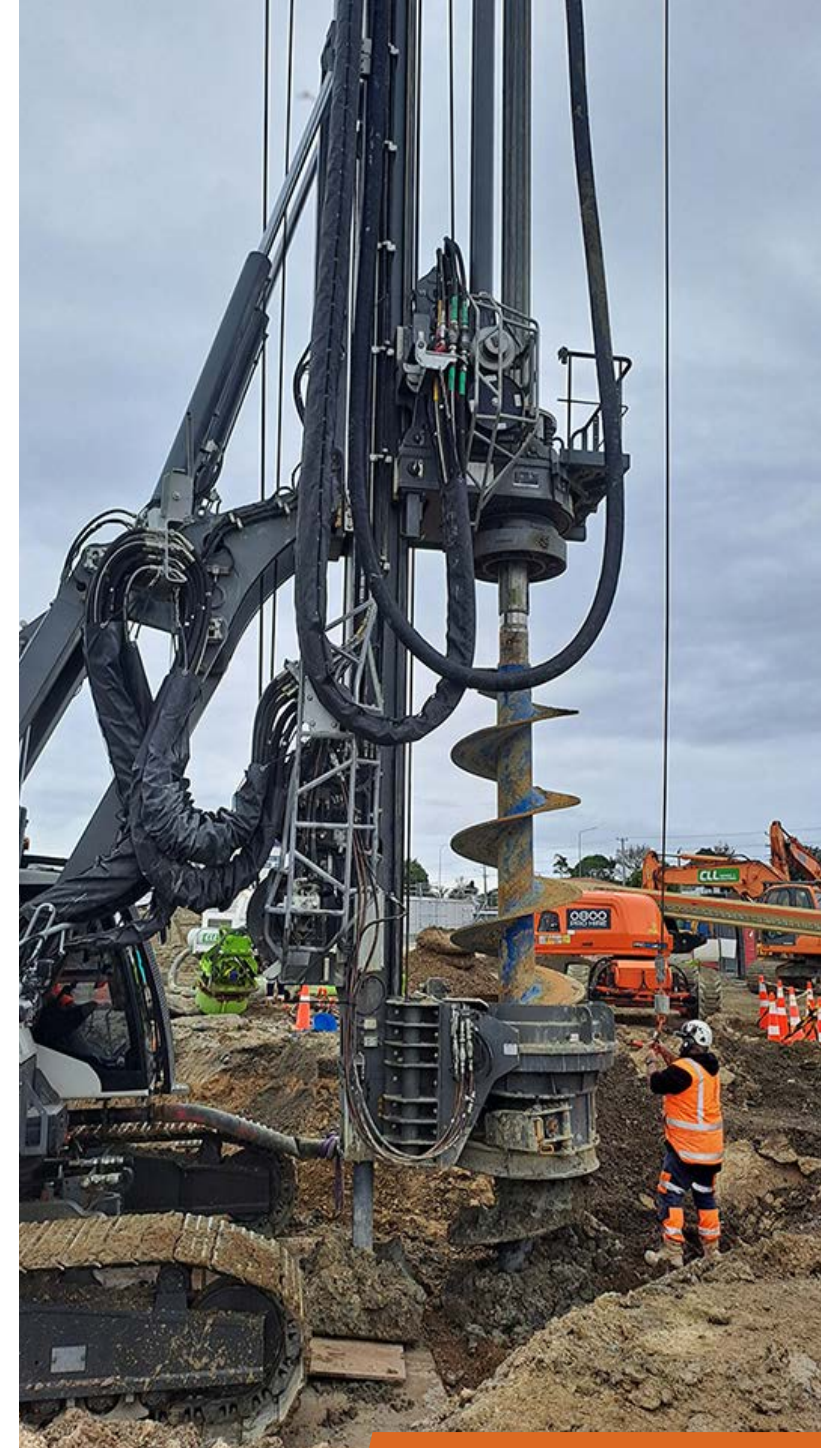


DOUBLE ROTARY CFA

Double rotary drilling is used to construct cast-in-place piles for deep concrete foundations or pre-drilling.

It combines a CFA (continuous flight auger) and a continuous casing, with each rotating independently in opposite directions. The casing and auger (inside the casing) are simultaneously installed and extracted during the drilling process.

Antares Hire have 600 mm, 750 mm and 900 mm Double Rotary tools.





PILING TOOLS - AUGERS

Antares Hire has a wide range of Augers to suit any drilling project and diverse drilling conditions. Auger drive sizes range from 75 mm to 200 mm diameter and include hexagonal. The cut sizes range from 175 mm to 1520 mm diameter. The CFA range includes 450 mm to 1200 mm diameter and 2 m to 6 m lengths. The Auger can be set with either teeth or bullets depending on the drilling requirements.

CLAY AUGER - SINGLE



CLAY AUGER - DOUBLE



Clay Augers are used for drilling in clay or compacted soil and tend to have Standard Teeth for cutting the ground. The low-pitched cut design minimises plugging to efficiently remove clay and silt from the ground.

HEX SOFT ROCK AUGER



Standard Teeth

A Hex Soft Rock Auger is used for light to medium duties and is ideally suited for drilling clay, but it can be used for sandstone and soft rock as long as the unit is not overloaded.

ROCK AUGER - SINGLE

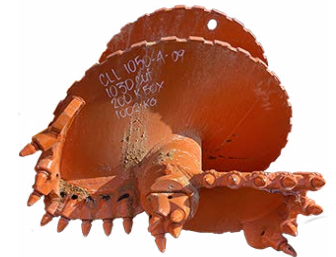


Rock Augers have Bullet-style Teeth and boring heads that cut through the rock.

ROCK AUGER - DOUBLE START



Rock Augers are specially designed to drill through very hard rock using a rotating pick tooth to penetrate otherwise impervious ground.



Bullet-style Teeth



Auger Pilot Bit

PROGRESSIVE AUGER

Progressive Rock Augers are full surface cutting tools designed to be used in very hard compact rock.

CORE BARRELS & DRILL BUCKETS

DRILL BUCKETS

Drilling buckets are typically used for loose soil and solid water-bearing grounds, to completely remove all soil, rock, and water before concrete can be poured for the pile. They are typically used in the construction of foundations for large buildings and bridges.

DRILL BUCKET - CLAY



DRILL BUCKET - ROCK



CLEAN-OUT BUCKET



CORE BARRELS

Core Barrels are used for hard rock drilling when conventional augers are less effective. The Core Barrel is designed with a thin cutting edge to provide less contact with the surface area and therefore increase the cut rate.

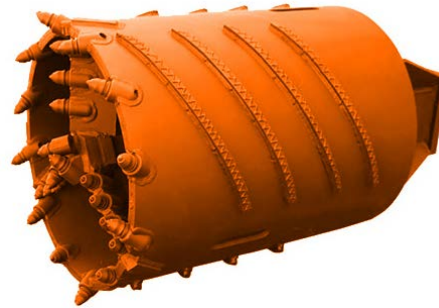
Antares Hire provides a range of Core Barrel sizes from 400 mm to 1500 mm diameter and cutting teeth.





PILING TOOLS

CROSS CUTTER



A Cross-Cutter is mainly used to break rock cores which remain in the bore hole after using a core barrel. The core is broken with a round shank chisel (pilot). The cuttings are then removed with buckets. It is suitable for drilling hard, jointed rock <100 MPa and for penetrating layers containing boulders.

BELLING TOOL



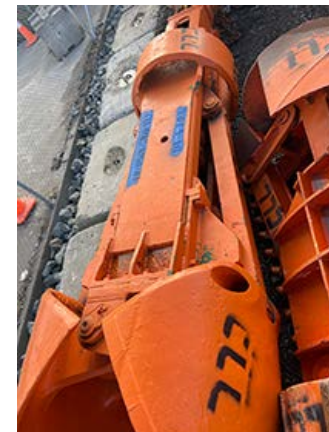
The bell tool is a pile foundation expander that is used to reinforce the bearing capacity of foundations during construction of high-rise buildings and compact heavily loaded bases.

SKIM TOOL



Used for taking the top off a concrete cast pile to finish it.

DOWN THE HOLE GRAB



This tool is dropped down the hole by crane to grab and pull rocks and boulders out of the hole.

BAILER



The bailer is set in motion backwards and forwards by two lengths of cable which gradually fills the tool with sand and gravel. The spoil is forced into the bailer by the dragging suction effect.

PILING TOOLS

KELLY BARS AND EXTENSIONS

Kelly bars extend the drilling depth of the hydraulic rotary drilling rig or excavator when constructing deep foundations. Telescopic Kelly bars transfer torque and crowd force from the rotary drive to the drilling tool.

Antares Hire has a variety of extensions and telescopic Kelly bars to achieve desired drilling depths for any project.

KELLY BARS



EXTENSIONS



KELLY BOX ADAPTORS



KELLY BARS



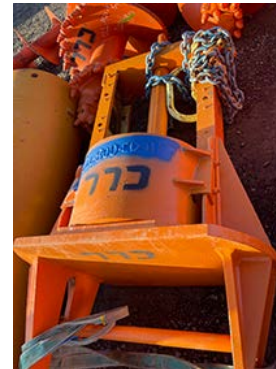
J-LOCK



J-LOCK TREE



CASING DRIVER





ANTARES CIVIL SUPPLIES - PILING AND CASINGS

Antares Civil Supplies specialises in high-quality piling, casings and consumables required for civil projects. We offer a wide range of essential products, including piling materials, foundation supplies, and various consumables.

CLUTCHED TUBE PILES

Clutched tubes are used for high-rise buildings and structural foundations. Clutched tube piles provide resilient foundations, ensuring stability to support the weight of the building and resist lateral forces such as wind and earthquakes.



STEEL BEAMS, I-BEAM/UB, I-BEAM/UC

Steel beams are ideal for bridge structures because they can support large amounts of weight over long distances as well as for structural foundations.



TIMBER POLES AND LAGGING

Timber poles and lagging are used for building retaining walls and as timber foundation piles.



STEEL SHEET PILES

Sheet Piles are used for constructing retaining walls and foundations.



0800 255677

www.antareshire.nz



ANTARES CIVIL SUPPLIES - PILING AND CASINGS



CASINGS AND STARTER CASINGS

Casings are used as permanent or temporary support structures for deep pile construction where soil conditions are unstable and likely to collapse. The temporary casing prevents the soil from collapsing into the hole during pile construction.

The casings are installed by the drill rig whilst the concrete is poured into the hole and then removed when the concrete has reached the appropriate depth for the pile.

STEEL PILE CAGES

Pile cages are used to strengthen vertical concrete columns when the soil condition is unstable or deep foundations are required.



SIREG

Sireg is non-metallic reinforcement for concrete with the strength of tensile steel. Being resistant to corrosion, it provides a durable infrastructure for environments with high rainfall or for coastal structures affected by sea water.





ANTARES CIVIL SUPPLIES - CONSUMABLES

Antares Civil Supplies is known for its excellent customer service and ensures that all products meet industry standards, contributing to the efficiency and safety of the construction process.

To ensure projects have sufficient consumables and can run smoothly, we provide a daily 'milk run' service that delivers essential stock to site where it is most needed.

Whether it's for large-scale infrastructure projects or smaller civil engineering works, Antares Civil Supplies stands out as a trusted partner in the industry.



Bolt Clamp for
Concrete Pumping



U Bolt with
Backing Plate



Whipcheck



Circular Spacer



Biocrete



CRC Soft Seal



Oil Intel Python Tub



Sika Formol Tub



Pool Noodles



Multitrack Non-Woven
Geotextile Roll



Bentonite

CONCRETE PUMPS

Antares Hire has a number of concrete pumps in various sizes to provide freshly mixed concrete to wherever it is needed on the construction site. These are ideal for use in constructing concrete pile foundations alongside a drilling rig or excavator.



Specially designed for concrete pile foundations in combination with a drilling rig, such as LRB23.

LIEBHERR 110 D5-K

Engine Power	160 kW (215 hp)
Max. Concrete Output	122 m ³ /h
Max. Concrete Pressure	76 bar
Pump Cycles	38 strokes/min
Conveying Cylinder (ø x stroke)	200 x 1397 mm
Hopper Capacity	598 l
Oil Tank	348 l
Max. Hydraulic Pressure	320 bar
Water Tank	450 l
Water Pump	20 bar
Dimensions (LxWxH)	5182 x 2438 x 2591 mm
Operating Weight	7650 kg
Travel Speed	2.57 kph

SOILMEC SKP80 P6.80

Diesel Engine	110 kW (150 hp)
Concrete Output	80 m ³ /h
Outlet Pressure	60/90 bar
Outlet Diameter	150 mm
Hopper Capacity	610 l
Cylinders Diameter	200 mm
Cylinders Stroke	1600 mm
Oil Tank	430 l
Air Compressor	1050 l/min - bar
Water Pump	36 l/min - 16 bar
Dimensions (LxWxH)	5460 x 1800 x 2300 mm
Operating Weight	5650 kg



MECBO SKP40 CAR-P4.40 D-TK

Diesel Engine	45 kW (61 hp)
Concrete Output	40 m ³ /h
Outlet Pressure	50/70 bar
Outlet Diameter	125 mm
Hopper Capacity	520 l
Cylinders Diameter	180 mm
Cylinders Stroke	1000 mm
Oil Tank	330 l
Air Compressor	1000 l/min - 10 bar
Water Pump	36 l/min - 16 bar
Dimensions (LxWxH)	4830 x 1750 x 2200 mm
Weight	4150 kg





GROUT PLANT

Grout pumps are used for a variety of projects in construction and repair work, to:

- Connect and seal joints in structures
- Level sidewalks
- Restore and repair historical structures
- Build retaining structures to prevent soil erosion
- Prevent water hazards in underground structures, like dams, and lining tunnels and sewers.

STA 20M3

The STA 20M3 is a 20 cubic meter per hour containerised mixing and batching plant, with electronic weighting system, for the production of grout, bentonite and drilling fluids.

Automatic and manual management.

STA is an Italian manufacturer of grout pumps using modern mixing techniques, colloidal pump mixing, automated feed, and batch control and pump control.

CHEMGROUT



Each ChemGrout unit is designed for "balance" of grout delivery. Complete grouting units are always designed to allow the operator continuous, non-stop grouting capability at published pumping rates for the unit.



PUMPS & VACUUMS

Antares Hire has a variety of pumps and vacuums for removing ground water from sites without drainage and transferring dirty waste water, slurries and sludge during construction and landscaping projects:

- Diaphragm Air Pumps for de-watering above and below ground sites and transferring fluids
- Submersible Pumps for draining water and fluid containing sand or suspended solids
- Trash Pumps for removing dirty water containing solids, effluent transfer and cleaning drains
- Vacuum Excavator Pumps

HYDRAULIC SUBMERSIBLE PUMPS



Make/Model	Head Max. (m)	Output (l/min)	Dimensions (WxH mm)	Weight (kg)
Reid Drainvac 400A - 2" Semi-vortex Drainage Submersible Pump	12	220	-	-
Drainvac 750A-3 - 3" Semi-vortex Drainage Submersible Pump	10	330	-	-
Dynaset HSP600 Hydraulic Submersible Pump	30	600	140 x 510	7
Dynaset HSP900 Hydraulic Submersible Pump	21	900	141 x 335	5.2
Dynaset HSP2600 Hydraulic Submersible Pump	35	2600	350 x 700	20
Dynaset HSP3000 Hydraulic Submersible Pump	50	3000	304 x 347	13

HONDA GX270 TRASH PUMP



HONDA GX160 FIREBOSS WATER PUMP



ENERPAC TURBO 11



Low flow rate air over hydraulic pump provides power and speed for single acting tools and simple clamping circuits.

DITCH WITCH FX20 VACUUM



568 L spoil tank
303 L freshwater tank

SOLIDSVAC SV-70 VACUUM



Designed to pump any flow-able sludge and slurry.





GENERATORS & POWER PACKS

Antares Hire has a significant range of power packs and generators from 2 kVA to 220 kVA to provide power to a variety of on-site construction tools and equipment, such as drills, crane vibratory hammers and pumps. The sample selection below includes a variety of welders and portable generators with machines mounted on a skid base, trolley with wheels or trailer.



Make/Model	kVa	Engine	Fuel	Fuel Tank (L)	Dimensions (LxWxH mm)	Weight kg
Honda EU22i Inverter Generator	2	HONDA GXR120	Petrol	3.6	511 x 290 x 425	21
Portable Brigs & Stratton Elite 3500/3000	3.5	B&S OHV	Petrol	19	648 x 536 x 544	52
GT Power GT3600E	3.5	Power Dyne	Petrol	15	625 x 490 x 510	50
GENMAC COMBIPRO RG7300HAC-M	5.7	HONDA iGX390	Petrol	25	800 x 640 x 700	108
Portable GT Power 7000ES-1	6	Power Dyne	Petrol	25	725 x 545 x 605	88
Genmac Combiplus RG5000YEO	6.1	Yanmar L100	Diesel	19	810 x 550 x 680	95
Honda 7800E Generator	6.5	HONDA GX390	Petrol	25	690 x 530 x 550	89
Honda EU70is Inverter Generator	8	HONDA GX390	Petrol	19	845 x 700 x 721	118
Denyo 10ESX	10	Kubota D1403-K3A	Diesel	62	1390 x 650 x 900	503
Titan 12000E Generator	12	22HP OHV TITAN V Twin	Petrol	40	855 x 625 x 720	139
Lees LSY15S3	14	YD480D	Diesel	69	1680 x 800 x 1050	690
Shindaiwa DGW420DM Welder	15	KUBOTA D1105	Diesel	43	1435 x 700 x 848	480
Genmac Infinity 20KVA Generator on Trailer	20	Yanmar 4TNV88	Diesel	n/a	1802 x 752 x 1130	618
Himoinsa HYW45 Backup	43	Yanmar 4TNV98CTIHR	Diesel	120	1850 x 780 x 1410	619
Lincoln Ranger 305D Welder	72	Kubota D722	Diesel	45	1327 x 546 x 759	317
Powerlink WPS180BS-AU	180	Perkins 1106A-70TAG3	Diesel	950	3468 x 1140 x 2088	2804
Lees LSC220S3 Trailered Generator	220	Cummins 6CTAA8.3-G2	Diesel	575	3620 x 1232 x 2050	2680



0800 255677

www.antareshire.nz



AIR COMPRESSORS

Industrial grade air compressors are designed for tough construction site conditions, whether it's road building, civil engineering or restoration work. They are easy to operate and provide power to a variety of tools and on-site construction equipment.

Antares Hire provides a range of air compressors from 180 to 800 CFM, as shown with this selection, which are ideal for heavy duty construction work.

Make/Model	CFM	Flow	Bar	Engine	Fuel	Fuel Tank ltr	Dimensions mm (LxWxH)	Weight kg
CompAir C50 (w Trailer)	180	5 m3/min	7	Yanmar 4TNV88BKCP	Diesel	60	3797 x 1490 x 1327	866
Comp Air C115-12 (w Trailer)	400	11.5 m3/min	12	Cummins QSB 4.5	Diesel	210	4605 x 1820 x 1790	1950
CompAir C110-9 (w Trailer)	400	11.3 m3/min	8.6	Cummins QSB 4.5	Diesel	210	4605 x 1820 x 1790	1950
CompAir C105-14 (w Trailer)	400	10.5 m3/min	14	Cummins QSB 4.5	Diesel	210	4605 x 1820 x 1790	1980
RotAir D400 (w Trailer)	400	10-12 m3/min	7-12	JCB 444TCA	Diesel	200	2769 x 1300 x 1886	1850
CompAir C230TS-9 (w Trailer)	800	23 m3/min	8.6	Cummins 6BTAA5.9	Diesel	370	5500 x 1960 x 2304	3320
CompAir C240TS-14 (w Trailer)	800	24 m3/min	14	Cummins QSB 6.7	Diesel	370	5440 x 1960 x 2350	3310





MANITOU MT-X 1440A TELEHANDLER

Designed for use on demanding work sites, the MT-X 1440 A is capable of lifting loads up to 14 m in height, and can be equipped with a work platform for roofing or siding work.



Technical Data

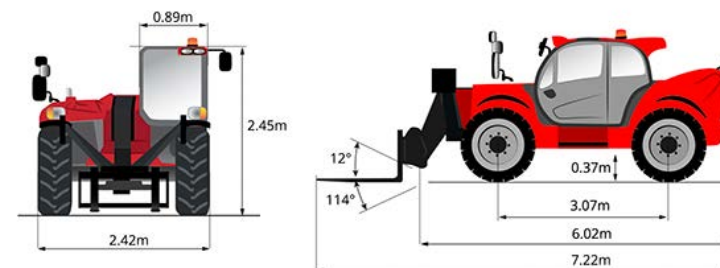
Dimensions	Overall length to carriage	6.02 m
	Overall height	2.45 m
	Overall width	2.42 m
	Forks (length/width/section)	1200 mm x 125 mm x 45 mm
Working Range	Max. lifting height	13.53 m
	Max. lifting capacity	4000 kg
	Max. outreach	9.46 m
	Breakout force with bucket	8800 daN
	Lifting speed	15.7 s
	Lowering speed	13.3 s
	Extension	19.2 s
	Retraction	14.8 s
	Crowd	4 s
	Dump	4 s
	Tilt angle (up/down)	12°/114°
Total Operating Weight (unladen w man basket)		11755 kg
Travel Speed		24.9 kph

Refer to the technical specification for full details on performance, dimensions, working range and lifting capacity as machine specifications can vary.

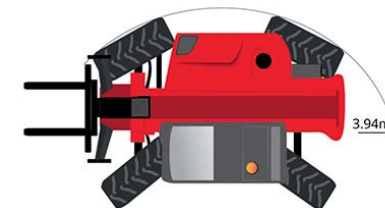
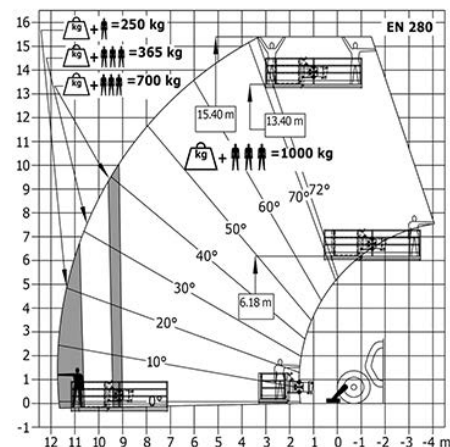
Attachments:

- 2 Person Man Cage
- Telehandler Forks
- GP Bucket
- Jib Hook
- RAPs Bucket & 1500 m³ RAPs Bucket

Dimensions



Machine on Stabilisers with Man Basket



ELEVATED WORK PLATFORM

The Sinoboom GTBZ22J is a robust and reliable telescopic boom with a maximum working height of 24.2 m and a lifting capacity of 250 kg.

Technical Data

Working Range	Max Platform Height	22.2 m
	Max. Working Height	24.2 m
	Max. Horizontal Reach	16.6 m
	Turning Radius - Outside	4.97 m
	Turning Radius - Inside	1.66 m
	Turntable Tailswing	1.42 m
	Turntable Rotation	360° continuous
	Platform Rotation	160°
	Gradeability	30% (2WD) 45% (4WD)
	Lift Capacity	250 kg unrestricted
	Drive Speed - Stowed	0-63 kph
	Drive Speed - Raised	0-1.1 kph
	Allowable Wind Speed	12.5 m/s
Dimensions	Allowable Working Slope	5°
	Allowable Lateral Force	400 N
	Length Stowed	11.2 m
	Width Stowed	2.49 m
	Height Stowed	2.84 m
	Ground Clearance	0.45 m
	Wheel Base	2.49 m
	Platform Dimensions	2.44 x 0.91 x 1.1
	Total Weight	12165 (2WD) 12235 (4WD)
	Hydraulic Tank	170 L
	Fuel Tank	160 L





SKIDSTEER TRACK LOADERS

BOBCAT BC-T590 SKIDSTEER

Working Range	Tipping Load	2773 kg
	Rated Operating Capacity - 35% load	971 kg
	Pump Capacity	64.7 l/min
	Bucket Width	1727 mm
	Height to Hinge Pin	3023 mm
	Diesel Engine	66 hp
	Engine Power at 2600 rpm	50.7 kW
	Torque at 1800 rpm	252.3 Nm
	Fuel Tank	138.2 l
Dimensions	Travel Speed	11.4 - 16.7 kph
	Total Length (w bucket grounded)	3378 mm
	Total Width	1702 mm
	Height to Cab	1972 mm
	Operating Weight	3664 kg
	Ground Pressure	40 kPa

KUBOTA SVL75-2 SKIDSTEER

Working Range	Tipping Load	2980 kg
	Rated Operating Capacity - 35% load	1043 kg
	Breakout Force (bucket)	2814 kg
	Breakout Force (lift arm)	2162 kg
	Height to Hinge Pin	3025 mm
	Reach at Max. Lift & Dump	1060 mm
	Max. Dump Angle	40°
	Length of Track on Ground	1436 mm
	Ground Clearance	296 mm
Dimensions	Travel Speed	7.5 - 11.5 kph
	Total Length (w bucket grounded)	3576 mm
	Total Width (standard track)	1675 mm
	Bucket Width	1727 mm
	Height to Cab	2083 mm
	Operating Weight	4225 kg
	Ground Pressure (standard/wide track)	5.8/4.9 PSI



CATERPILLAR CAT 289D SKIDSTEER

Working Range	Tipping Load	3750 kg
	Rated Operating Capacity - 35% load	1315 kg
	Breakout Force (tilt cylinder)	3307 kg
	Max. Lift Height	3178 mm
	Max. Reach (w arms parallel to ground)	1270 mm
	Max. Reach Lift & Dump	761 mm
	Max. Dump Angle	51°
	Length of Track on Ground	1630 mm
	Ground Clearance	226 mm
Dimensions	Travel Speed	7.2 - 13.3 kph
	Length (w bucket grounded)	3714 mm
	Width (450 mm track)	1981 mm
	Max. Overall Height	4015 mm
	Height to Cab	2113 mm
	Operating Weight	4848 kg
	Ground Pressure (450 mm track)	32.3 kPa



0800 255677

www.antareshire.nz



DRUM ROLLER

BOMAG TANDEM ROLLER - BW138 AD-5

This light tandem roller is excellent for soil compaction and asphalt patching, making it ideal for footpaths and repair work as well as finishing work in road construction.

Technical Data & Dimensions

Working Range	Operating Weight (w ROPS CECE)	4500 kg
	Engine	Kubota V2403
	Speed	2400 rpm
	Vibrating Drum	Front/Rear
Exciter System	Frequency	3000/3360 vpm
	Amplitude	0.51 mm
	Centrifugal Force	4609/5812 kg
Dimensions	Length	2840 mm
	Width	1468 mm
	Max. Height	2700 mm
	Roller Diameter	900 mm
	Travel Speed	9.98 kph
	Max. Gradability	40%
	Gross Weight	5450 kg

Compaction Work

Reversing is modulated and very precise. Drum vibration can be activated for the front or rear drums only, or for both drums.

Sprinkler System

Wind-protected sprinkler nozzles ensure even wetting of the drums in all conditions.

Operator Platform

Spacious operator's platform with compact steering wheel for ease of access. Robust dashboard with large switches and intuitive soft-responsive control lever and clear view of the drum edges for precision work.





WATERBLASTERS

Antares Hire has a number of heavy duty waterblasters for high pressure cleaning of machines and tools or removing surface material and contaminants during construction work.

YR PRO TRAILERED



Flow l/min: 17
Max. Pressure: 3700 psi
Hose Length: 2x30 m

PRO-BLAST PB4000HE-F HONDA GX390



Flow: 15 l/min
Max. Pressure: 4000 psi
Hose Length: 30 m 3/8"
Weight: 85 kg

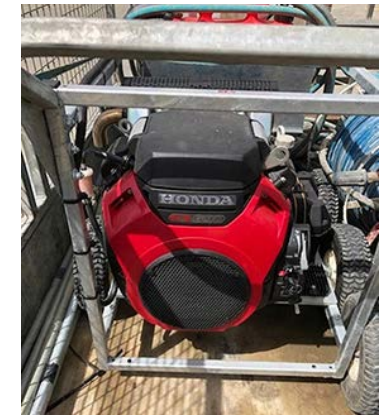


PRO-BLAST PB3000H-F HONDA GX200



Flow: 11 l/min
Max. Pressure: 3000 psi
Hose Length: 15 m 3/8"
Weight: 42 kg

HONDA GX690 TRAILERED



Flow l/min: 30
Max. Pressure: 3626 psi
Weight: 69 kg

0800 255677

www.antareshire.nz



ANTARES TRANSPORT

Antares Transport manages the logistics and timely delivery of machines, tools and materials to construction sites and projects across New Zealand. The fleet has a wide range of small to heavy trucks and transporters, Hiabs, flat decks, specialised semi trombone trailers, articulated units, tip trucks and concrete trucks to meet the needs of any project.



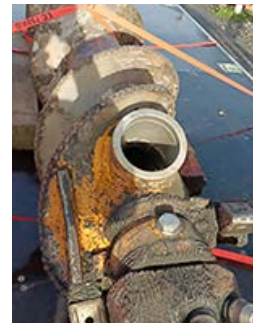
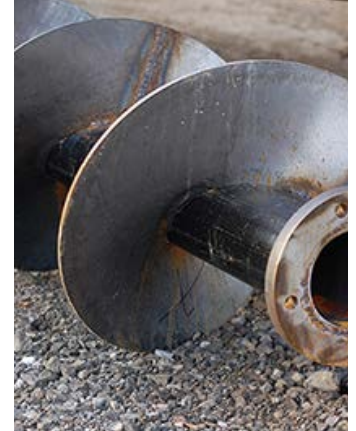
www.antareshire.nz

0800 255677



ANTARES ENGINEERING

Antares Engineering is all about innovation and problem-solving. Our team of highly skilled engineers specialise in the design, fabrication and repair of heavy construction tooling, casings and attachments for drilling rigs and excavators. We create innovative solutions to maximise tool capabilities for a wide range of drilling applications and challenging site conditions, and our professional certified welders are experts in precision custom fabrication.



0800 255677

www.antareshire.nz



ANTARES MECHANICAL

Our team of professionally trained technicians have years of experience in repairing and servicing drill rigs, excavators and heavy construction machines and are proficient in diagnosing and resolving complex mechanical or electrical issues. They pay close attention to detail and always follow safety guidelines and industry best practice to ensure repairs are carried out correctly and components are operating safely.



Our mechanical team is highly skilled in

- Maintaining hydraulic components
- Drill rig and excavator servicing, repairs and rebuilds to specified industry standards
- Using the latest diagnostic tools and technology to locate mechanical or electrical issues.

Maintenance / Inspection after service hours						Tasks to be	
By Day/Daily	40h/Weekly	500h/Quarterly	1000h/Every six months	2000h/Annually	Special intervals	By maintenance staff	by Li
						<ul style="list-style-type: none"> ■ Once-only activity ● Repeat interval ✦ If necessary ※ Annually before the winter 	<ul style="list-style-type: none"> □ Or ○ Re ◇ If i
Machine							
						<ul style="list-style-type: none"> Check machine. Visual inspection and function test of entire m tion (e.g. emergency stop, overload or collisio 	
						Diesel engine D936 A7-05, D946	
						<ul style="list-style-type: none"> Observe maintenance notes in the manuacu Check motor oil level. Check motor oil level with oil dipstick. Check motor for leak tightness and damage. 1000h / 2 years: change motor oil, oil filter ins if Liebherr motor oil is used. 500 h / annually: change motor oil, oil filter ins element if motor oil from third party manufact Check state of belt drive and replace V-ribbec 5000 h: exchange belt drive. Check intake system and exhaust system for light. Check oil trav motor heating and motor brack 	



All plant and tooling is maintained to the highest safety standards and is given a rigorous PDI (Pre-Delivery Inspection) before being delivered to any project site to ensure maximum safety and operational effectiveness.



www.antareshire.nz

0800 255677



ABOUT CLL

CLL is a private and employee owned organisation, that has grown over the past 35 years into a company of over 250 full-time employees spread across divisions in Auckland, Northland, Tauranga, and Christchurch. Our commitment to our staff, culture, and providing an inclusive family environment has been the cornerstone of our success.

We are leaders in foundations, piling and ground improvement solutions in some of the most demanding conditions, and we stay at the forefront of our industry by connecting with local and offshore supplier networks and investing in state-of-the-art techniques and machinery to deliver challenging projects.

Antares Group has been developed within the CLL family to specialise in the Hire, Transport, Mechanical and Engineering of heavy to light piling and drilling equipment for deep foundation projects and infrastructure projects, such as rail and bridges.



WE DO LARGE SCALE PROJECTS...

- Design and Construction
- Deep Piling & Drilling Solutions
- Ground Stabilisation & Improvement
- Piling Drainage Solutions
- Underwater Foundations
- Rail Infrastructure



Health & Safety
ISO 45001



Environment
ISO 14001



Quality
ISO 9001



09 412 7048

www.cll.net.nz







part of the **CLL** GROUP



Antares Group specialises in the Hire, Transportation, Mechanical and Engineering of heavy to light piling and drilling equipment for deep foundation projects, such as, earth retention, landslip prevention and structural building support, and infrastructure projects for tunnel, rail, road and bridge construction.

We are trusted to provide strong and reliable equipment and our tooling can easily be adapted to fit the drill rig, excavator or digger required for your project. **Call 0800 255677 to discuss hire or purchase options on our range of piling and drilling equipment.**